

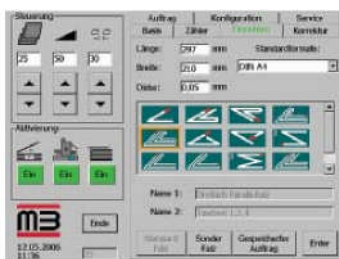
Computer-controlled leaflet folder



CAS 21/4 NET

The computer control simplifies machine operation. A touch-screen is the interactive operator interface where all important settings are made.

After the paper size and the type of fold have been entered, the fold plate stops and deflectors move to their calculated positions by pushing a button. The fold rollers are also set automatically.



The basis for this is the chosen type of fold and the predetermined paper thickness. Setting up saved jobs is even more user-friendly,

because all individual corrections are considered and accurately reproduced.

Besides the settings of fold plate stops, deflectors, fold rollers, and reading heads; the data for speed, counter and kicker are also predetermined.

Fields of application:

- Can be integrated into cartoning machines
- Offline machine for pharmaceutical folds

Set-up by pushing a button:

- Automatic fold plate setting
- Automatic fold roller setting
- Automatic positioning of code reading heads
- 16 standard folds are pre-programmed
- Other folds are freely programmable
- Memory for 200 repetitive jobs
- Interface: Ethernet TCP/IP/FTP

Benefits:

- No calculating of stop positions
- No removal of fold plates
- No need to install deflectors
- Short walking distances

Short set-up times
Simple operation
A minimum of waste

Paper sizes:

Version I: max. 8.5" x 12.5"
min. 3.94" x 3.15"

Version II: max. 8.5" x 23.62"
min. 3.94" x 3.15"

Fold length: max. 9.45"; min. .63"

Paper weight: 11 to 48 lb. bond

Speed: 788 ft/min. (depending on material)

Electrical: 3 x 208V / 60 Hz / PE

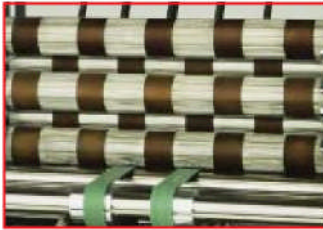
Folding better automatically.

Optimized equipment



Feeder with swivel-mounted pile table

- Separates both unfolded and pre-folded sheets
- Stack height up to 2,500 sheets (DIN A4; 13 lb. bond)
- Replenishment from the top without machine stop
- Swivel-mounted, therefore good accessibility for maintenance jobs
- Pile table available in two versions:
for paper sizes up to a length of 12.5"
for paper sizes up to a length of 23.62"



Fold rollers

- Polyurethane-steel-fold rollers with self-cleaning effect
- Long service life
- Automatically adjustable
- Driven by low-noise and almost maintenance-free flat belts



Fold plates

- Four automatically adjustable fold plates with integrated automatic deflectors
- Deflectors with uninterrupted surfaces prevent marks on paper
- Electrical connection is achieved automatically, no more tangled cables and plugs



Small format vertical stacker SKM 36

- Prevents small folds from opening up
- Infeed width: max. 14.17"; min. 1.97"
- Smallest fold length: .63"

Network-capable:

With the optional Ethernet interface using TCTP/IP protocol, jobs can be set up and recalled from remote work stations of the packaging line.

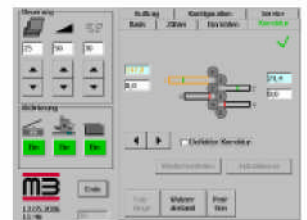
Touch technology



Simple



Fast



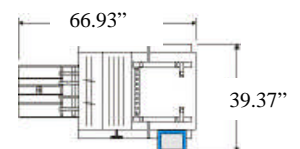
Convenient



Optional equipment

- Reading heads for one or two-sided reading
- Professional scoring device
- Diverter after the fold unit

Floor space



CAS 21/4 NET with SKM

Distributed in the United States by GBR Systems Corporation
 800-833-6167 / 860-526-9561 / Fax: 860-526-2747
 Internet: www.gbr.com / e-mail: sales@gbr.com
 Managing the World's Paper Flow™
 GBR Systems Corporation is a subsidiary of Mathias Bauerle GmbH

