

Mathias Bäuerle GmbH · Gewerbehallestraße 7-11

D-78112 St.Georgen · Telefon (07724) 882-0 · Telefax (07724) 882-111

Internet: <http://www.mb-bauerle.de> · E-mail: [center@mb-bauerle.de](mailto:center@mb-bauerle.de)

---

# **prestigeFOLD NET 52**

## **Operator Panel**

# **Operator's Manual**



# CONTENTS

<b>1. SAFETY INSTRUCTIONS</b>	<b>5</b>
<b>2. Operator Panel</b>	<b>9</b>
Description	9
BASIC Menu	11
SET-UP Menu	12
Setting the Type of Fold	13
Standard Fold	13
Special Fold	16
Saved Job	17
CORRECTION Menu	18
COUNTER Menu	26
CONTROL Menu	27
CONFIGURATION Menu	28
JOB Menu	30
SERVICE Menu	33

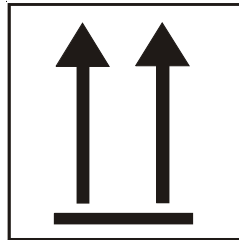
**The title, copyright and all other proprietary rights in this document are vested in Mathias Bäuerle GmbH and no part of it may be reproduced in any form without the written permission of Mathias Bäuerle GmbH.**



# 1. SAFETY INSTRUCTIONS

## 1.1 Safety Instructions for Transport and Set-Up

The following instructions and warnings are applied to the packing to ensure appropriate and safe transport:



**Top! Transport in upright position only!**



**Protect from humidity!**



**Fragile! - Handle with care!**

These instructions and warnings must also be observed for transport within the users premises.

For transport to other premises resp. for return shipment the machines must be packed and provided with the same markings.

## 1.2 Fundamental Safety Instructions

### Warnings and Symbols

The following symbols and designations are used in the manual to identify instructions of particular importance:



General instructions and special information on how to use the machine most efficiently.



Instructions designed to prevent injury or extensive equipment damage.

### Basic Operation

The machine has been built in accordance with state-of-the-art standards and the recognized safety rules.

Nevertheless, operators and third parties may get injured when working with the machine, or damage to the machine and to other material property may result.

The machine must only be used in a technically perfect condition in accordance with its designated use and the instructions set out in the operator's manual.

Any malfunctions, especially those affecting the safety of the machine, should therefore be rectified immediately.

## Organizational Measures

The operator's manual must always be available near the machine.  
In addition to reading the operator's manual, observe and instruct the user in all other generally applicable legal and other mandatory regulations relevant to accident prevention and environmental protection.  
The operator's manual must be supplemented by instructions covering the duties involved in supervising and notifying special organizational features such as job organization, working sequences or the personnel entrusted with the work.

Personnel entrusted with work on the machine must have read the operator's manual and in particular the chapter on safety before beginning the work.  
Reading the instructions after work has begun is too late.  
This applies especially to persons working occasionally on the machine, e.g. during set-up or maintenance.  
Check, at least from time to time, whether the personnel is carrying out the work in compliance with the operator's manual and paying attention to risks and safety factors. For reasons of safety, long hair must be tied back or otherwise secured, garments must be close-fitting and no jewellery - such as rings - may be worn.  
Injury may result from being caught on moving parts.  
Observe all safety instructions and warnings attached to the machine.  
See to it that safety instructions and warnings attached to the machine are always complete and perfectly legible.  
In the event of safety-relevant modifications or changes in the performance of the machine during operation, stop the machine immediately and report the malfunction to the competent person.  
Never make any modifications, additions or conversions which might affect safety without the manufacturer's approval.  
Adhere to prescribed intervals or those specified in the operator's manual for routine checks and inspections.

## Selection of Personnel, Basic Responsibilities

Employ only trained or instructed staff and set out clearly the individual responsibilities of the personnel for operation, set-up, maintenance and repair.  
Work on the electrical system and equipment of the machine must be carried out only by a skilled electrician in accordance with electrical engineering rules and regulations.

## Standard Operation

Avoid any operational mode that might be detrimental to safety.  
Take the necessary precautions to ensure that the machine is used only in a safe and reliable state. Operate the machine only if all protective and safety-oriented devices such as removable safety devices, emergency stops, sound proofing elements, are in place and fully functional.  
In the event of malfunctions, stop the machine immediately and prevent further use.  
Have any defects rectified immediately.  
Before starting up or setting the machine in motion, make sure that nobody is in danger.

## Special Work, Maintenance, Repair

Observe the adjusting, maintenance and inspection activities and intervals set out in the operator's manual, including information on the replacement of parts and equipment.  
If the machine is completely shut down for maintenance and repair work, it must be secured against inadvertent starting by attaching a warning sign to the main switch.  
Always tighten any screw connections that have been loosened during maintenance and repair.

## Special Dangers

The electrical equipment of machines is to be inspected and checked at regular intervals.  
Defects such as loose connections or scorched cables must be rectified immediately.

## Product-Specific Safety Instructions



Exercise caution in the vicinity of rotating shafts, rollers and moving belts! Hair, loose garments and jewellery may get caught!  
**SERIOUS INJURY MAY RESULT!**



Exercise caution when running the machine with safety covers open and fold plates removed! Do not get close to the rotating fold rollers!  
**SERIOUS INJURY MAY RESULT!**



When making or breaking any electrical connection, always first turn OFF the main switch! Non-compliance may cause damage to electronic components!



Exercise caution at the delivery end of the fold unit! Do not get close to the rotating delivery shafts! **SERIOUS INJURY MAY RESULT!**

## 1.3 Cleaning and Maintenance

Regular and proper cleaning contributes to a long life of the machine and a consistent quality. Therefore it is important to clean the machine in regular intervals and above all to remove paper dust.

It is recommended to clean the machine once a week.



**Before cleaning the machine, always pull the power plug!**



**Exercise caution in the vicinity of the perforating- and slitting knives! They have sharp edges for proper function! SERIOUS INJURY MAY RESULT!**

Use only the special cleaning fluid from MB for cleaning the fold rollers.

**Do not use any solvents such as Aceton or Toluol. They would damage the non-metal parts of the rollers!**

Remove paper- or print powder dust from all fixed and movable parts of the machine.

Use compressed air to clean the fold plates when paper with a high degree of powder has been folded. Carefully remove deposits in the control box with a vacuum cleaner.

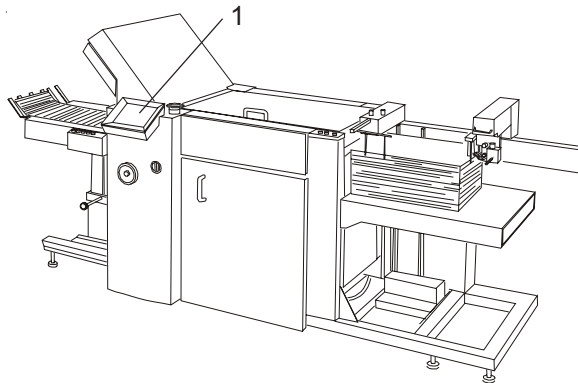
Clean the air filter of the compressor and the pump using brushes or air.

The maintenance-free flat belt drive needs no lubrication of any kind.



## 2. OPERATOR PANEL

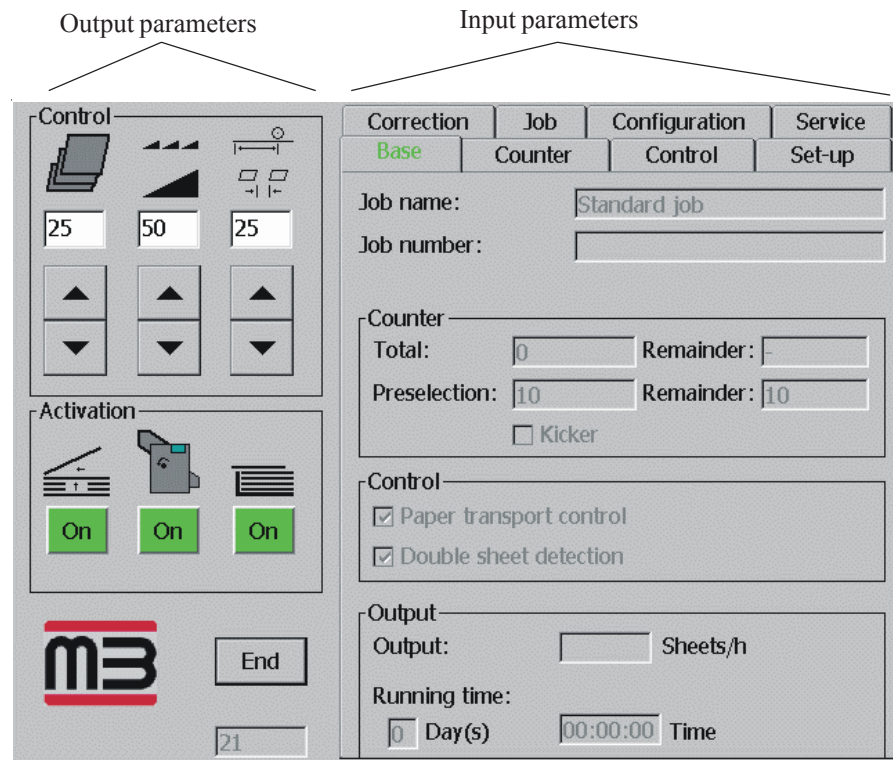
The central operator panel (1) of the machine is located at the first fold unit. It is equipped with a touch-screen display.



### Description Touchscreen-Display

Communication between operator and machine takes place by means of symbols, text displays and pop-up numerical or alphanumerical keypads.

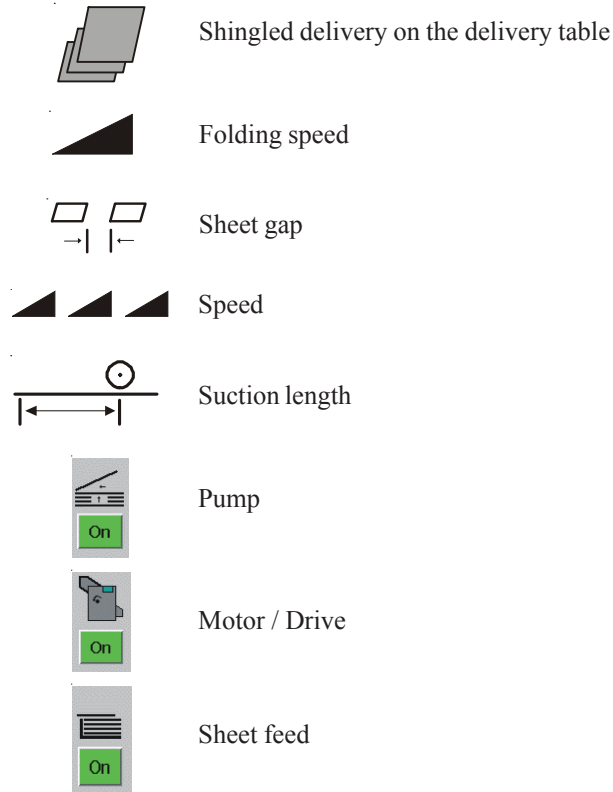
The touch-screen display is divided into two sections:



The presentation of the **output parameters** will always be the same. Form and content of the **input parameters** are variable because they depend on the menu selected.

### Description of the Output Parameters

The pictograms have the following meanings:



The figures below the pictograms show the current settings. The settings can be changed as follows:

- **by touching input windows:**

A numerical keypad appears and a new numerical value can be entered.

Incorrect entries can be corrected by touching the „Del“ key.


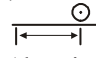
The „Enter“ key must be touched when a numerical entry has been completed and the computer should accept the value.

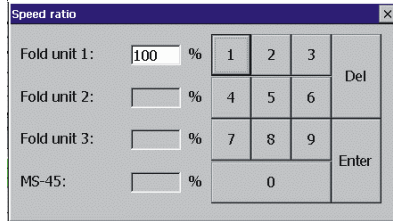


Additional calculator functions can be activated by means of the „Calc“ key.

- **by touching the arrow keys below the input windows:**

With the arrow keys, the setting can be increased or decreased directly without intermediate steps.

When the pictograms  and  are touched, sub-menus are opened for speed corrections and suction length (duration).

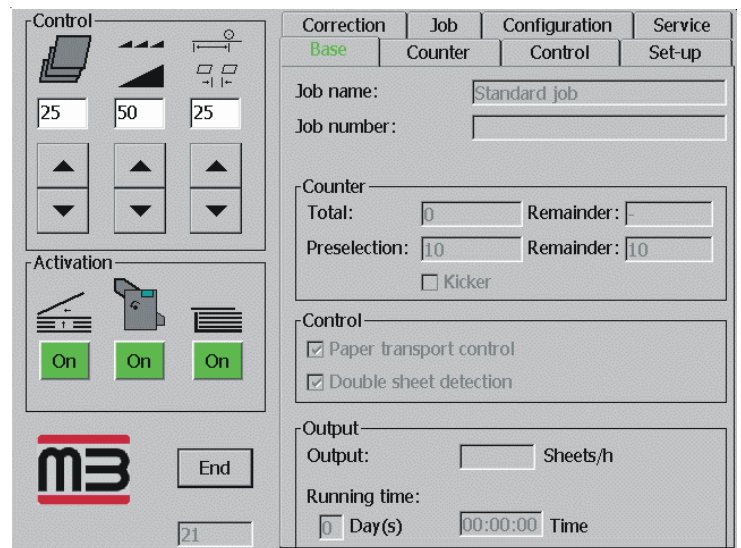


Optical signals draw the operator's attention to settings which deviate from the standard values. The pictograms change color - black becomes red.

### Description of the Input Parameters

The BASIC menu always appears when the machine is switched on. This menu signals readiness for operation and shows some important data about the current job.

### BASIC menu

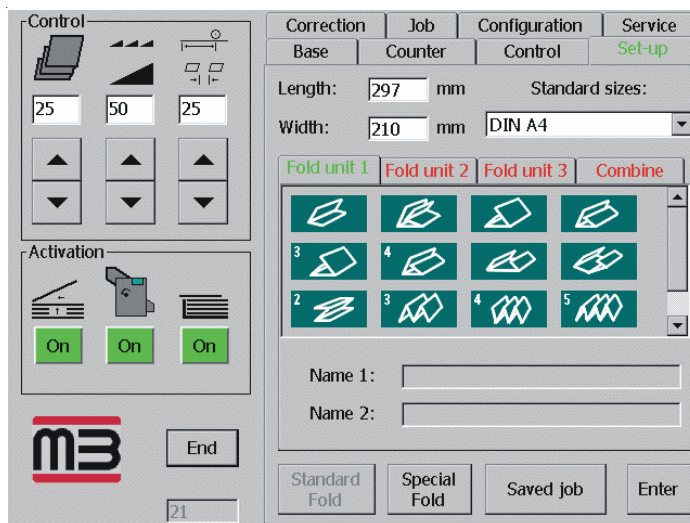


The input parameters are organized analogous to a conventional card file, i.e. different tabs show the menus that can be selected.

The current menu tab is highlighted with green script.

When another tab is touched, the display changes to a different menu whose contents and defaults then become visible.

**SET-UP Menu**




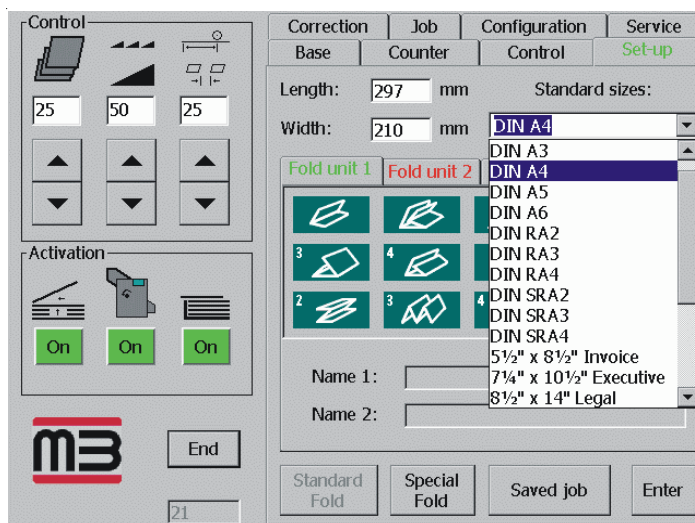
The set-up of a job starts with entering the format of the unfolded sheet:

- Touch the input windows for length and width  
Enter the numerical value by means of the keypad now open (in millimeters)

Incorrect entries can be corrected with the Del key.

Entry for the A6 to A2 format range:

- Touch the arrow  below „Standard sizes“ .
- Touch the paper size to be set.



## Setting the Type of Fold

For setting the type of fold there are three alternatives which can be selected by touching a key:



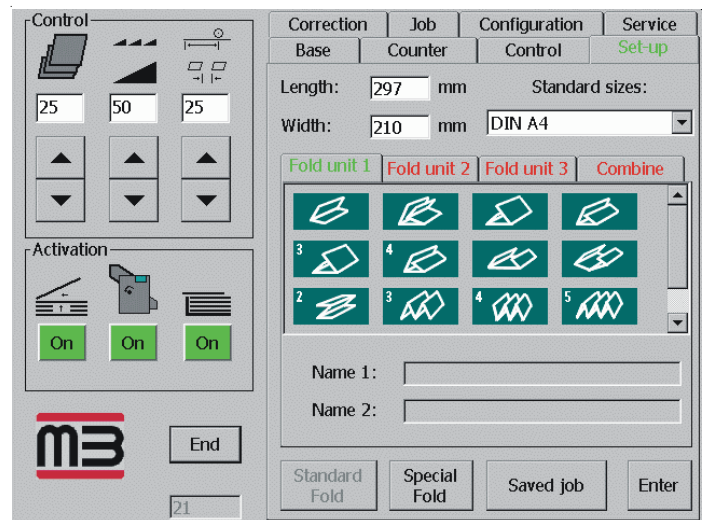
### Standard Fold



In the „Standard Fold“ mode, various types of fold are shown as pictograms. The operator selects the desired fold.

This mode of operation is activated as follows:

- Touch the „Standard Fold“ key



There are tabs above the fold symbols by means of which individual or several fold units can be selected. The colors indicate a status as follows:

- Red: Fold unit is not available (not connected or does not exist)
- Black: Fold unit is available, but has not been selected
- Green: Fold unit has been selected and is ready for set-up

Standard folds can be set as follows:

- By selecting a fold symbol for parallel folds (default for every individual fold unit)
- By selecting a fold symbol for crossfolds (default for at least two fold units)

**Set-up by means of fold symbols for parallel fold:**

This method for setting the type of fold is possible for all machine combinations, independent of the number of fold units.

- Touch the „Fold unit 1“ tab (turns green)
- Touch the appropriate fold symbol (the fold symbol is marked by an orange-colored frame)



If there are additional fold units „Fold unit 2“ resp. „Fold unit 3“ are set in the same way.  
When all folds are selected:

- Touch the Enter key.

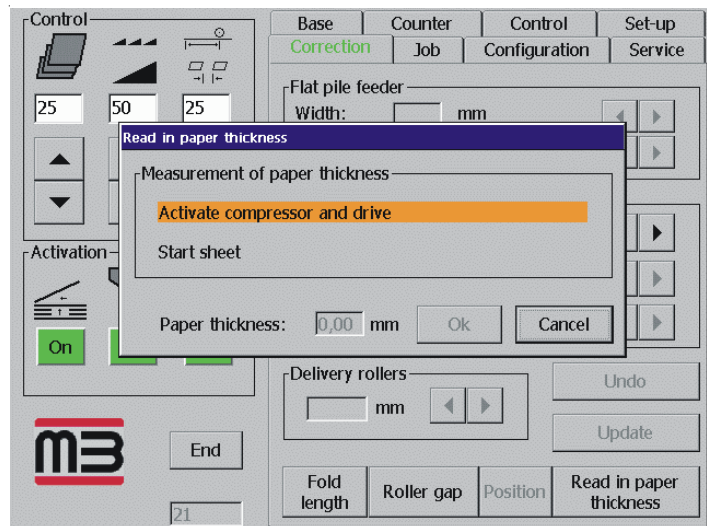
The following status messages appear in the display during automatic setting:

- „Setting plates“
- „Setting positions for feeder, alignment rails or delivery“

When the settings are complete, the color of the frame around the selected fold symbol turns from orange to green.

At the same time a window is opened indicating that the paper thickness must now be measured. For this purpose the feeder has to be loaded with paper.

**Measuring the paper thickness:**



- Touch the „Pump“ key



- Touch the „Drive“ key



- Touch the „Sheet feed“ key



A sample sheet is fed from the feeder and transported onto the register table. During this process, a sensor measures the paper thickness. The value measured is shown immediately in the window „Paper thickness“.

- Check the sample sheet for doubles. Confirm with



This activates the automatic setting of the fold rollers. The message „Setting rollers“ shows the status of the process. Automatic setting is complete when the status message disappears.

- Touch the „Drive“ key



The sample sheet is transported through the fold unit and reaches the delivery section as a folded product.

### Set-up by means of fold symbols for crossfold

This method of setting the type of fold assumes that the machine is equipped with two or three fold units. For typical crossfolds, the settings for several fold units can be made by touching just one key.

- Touch the „Combine“ tab.
- Touch the appropriate fold symbol (the fold symbol is marked by an orange colored frame).
- Touch the Enter key.

The following status messages appear in the display during automatic setting:

„Setting plates“

„Setting positions for feeder, alignment rails or delivery“

When the settings are complete, the color of the frame around the selected fold symbol turns from orange to green.

At the same time a window is opened indicating that the paper thickness must now be measured. For this purpose the feeder has to be loaded with paper.

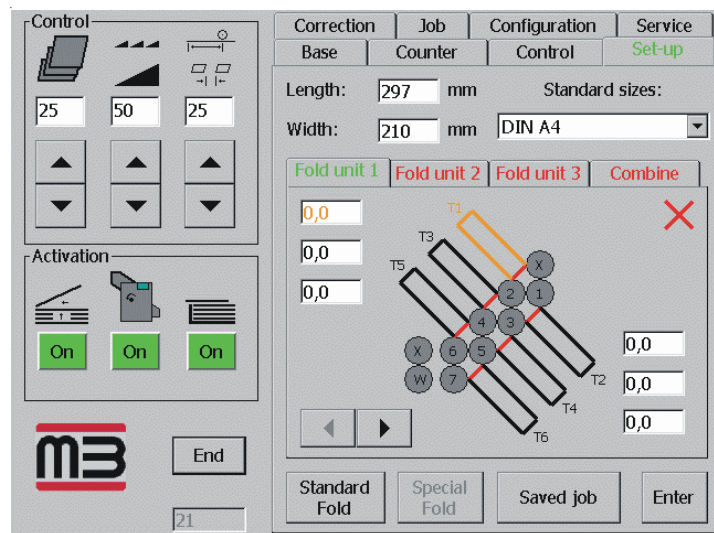
Settings for paper thickness measurement as described above.

## Special Fold

In the „Special Fold“ mode, the fold length for each plate is entered by means of a keypad. Calculator functions in the setting menu make it easier for the operator to calculate the fold lengths.

This mode of operation is activated as follows:

- Touch the „Special fold“ key



### Set-up with input windows:

- Select the desired fold unit (script changes color).
- Touch the fold plate to be set (fold plate and matching input window turn orange)
- Touch the input window. Enter the numerical value by means of the keypad now open (in millimeters).



Calculator functions for calculating the fold length can be activated by pressing the „Calc“ key. Incorrect entries can be corrected by pressing the „Del“ key.

- The entry of the fold length for each fold plate must be confirmed by pressing Enter.
- Press the Enter key in the bottom right corner. This activates the automatic setting of the fold length in all fold plates.



A green tick ✓ in the display means: Fold length setting completed.

A red cross ✗ in the display means: Setting must be confirmed by pressing the Enter key.

### Set-up with arrow keys

- Select the desired fold unit (script changes color)
- Touch the fold plate to be set (fold plate and matching input window turn orange)
- Touch the arrow key until the setting value is reached
- Confirm the entry with the Enter key in the bottom right corner

The following status messages come on in the display during the automatic setting process:  
 „Setting plates“  
 „Setting positions for feeder, alignment rails or delivery“

When the settings are complete, the color of the frame around the selected fold symbol changes from orange to green.

At the same time a window that is opened indicates that the paper thickness has now to be measured. The set-up procedure for the paper thickness measurement is described on the previous page.

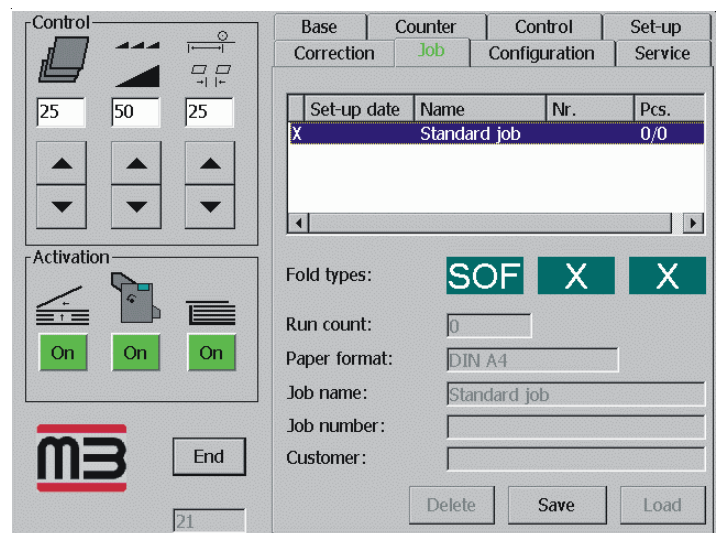
## Saved Job

In the „Saved Job“ mode, the complete data of the desired fold job are retrieved from the memory and converted into set-up instructions for the machine.

This permits the automatic positioning of all stops from the feeder to the delivery section as well as the settings of speed, sheet gap, suction length, shingled delivery, counter etc., including all individual corrections.

This mode of operation is activated as follows:

- Touch „Saved Job“



All the jobs that have been saved become visible in a window.

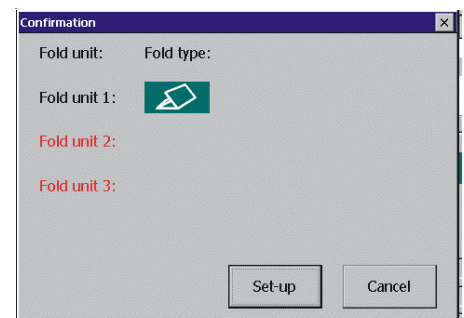
The current job is marked with an **X**.

The basic information for this job, such as type of fold, format, volume, name etc., are shown below the window.

- Selection of the job by touching the respective line.  
The background of the line turns blue and the basic information is displayed.
- Touch the „Load“ key.  
Type of fold and setting measurements are shown in a window that is now opened.
- Touch the „Set-up“ key.

Alignment rails, fold plates and fold rollers are set one after the other.

Appropriate status messages show the process. The settings are complete when the chosen job marked with an **X** is shown in the window.



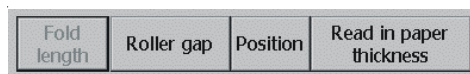
## CORRECTION Menu

With the CORRECTION menu, the following settings can be changed individually:

- Fold length
- Roller gap
- Position of rear edge separator / side stops in the feeder
- Positions of the alignment rails for register- and roller table
- Position of the delivery rollers in the shingled delivery

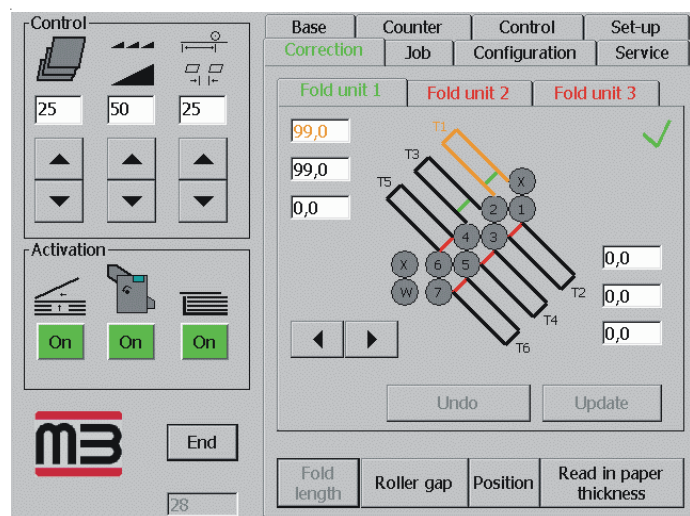
When calling up the CORRECTION menu, the sub-menu that has last been selected is always shown.

The respective sub-menus are called up by touching the appropriate key.



### Sub-menu „Fold length“

The fold plate stops in all fold units can be corrected with this sub-menu.



The correction of the fold length can be achieved as follows:

- With arrow keys (minor corrections of the fold length)
- Input windows (major corrections of the fold length)

#### **Correction with arrow keys:**

- Select the desired fold unit (script changes from black to green).
- Touch the symbol of the fold plate where the fold length has to be corrected (fold plate and matching figure field turns orange)
- Keep pressing the arrow key until the correction value is reached.



Incorrect entries can be cancelled with the „Undo“ key.

- When the correction entries are complete, touch the „Update“ key.



This command activates the automatic adjustment of all corrections that have been entered.

The „Update“ key can be touched after each individual correction or after changing all corrections.



After the adjustment, the „Undo“ and „Update“ keys are no longer active - This is shown by the change of the front color from black to grey.



A green tick ✓ in the display means: Correction of the fold length is complete.

A red cross ✗ in the display means: Corrections that have been set have not yet been executed. Correction settings are not initiated until touching the „Update“ key.

#### ***Correction with input windows:***

- Select the desired fold unit (script changes from black to green).
- Touch the symbol of the fold plate where the fold length has to be corrected (fold plate and matching input window turn orange).
- Touch the input window.  
Enter the figure by means of the keypad that is now open (in millimeters).



Calculator functions can be activated by touching the „Calc“ key.

Incorrect entries can be corrected by touching the „Del“ key.

- Confirm the entry by touching the Enter key. The keypad disappears and the next fold plate can be selected.



Incorrect entries can be cancelled with the „Undo“ key.

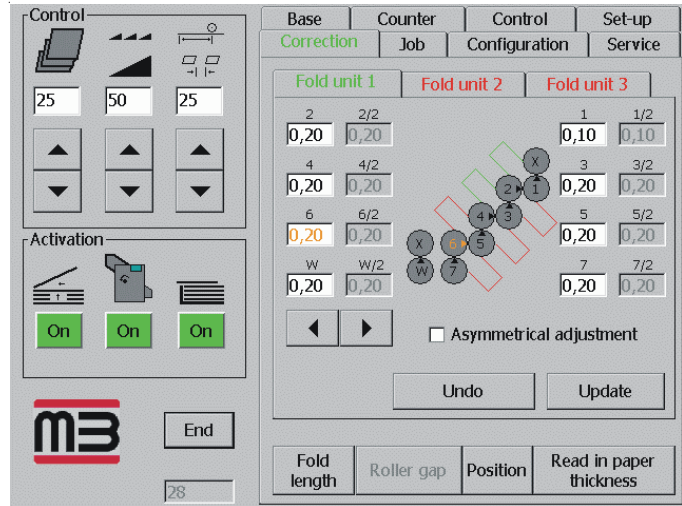
- Touch the „Update“ key after the entry of the correction has been completed. This command activates the automatic adjustments of all corrections that have been made.  
The „Update“ key can be touched after each individual correction or after changing all corrections.



After the adjustment, the „Undo“ and „Update“ keys are no longer active - this is shown by a change of the script color from black to grey.

**Sub-menu „Roller gap“**

All roller gaps can be corrected with this sub-menu.



All adjustable rollers are marked with an arrow and a number. The arrow indicates the direction (vertical or horizontal) in which the rollers can be adjusted.

The meaning of the numbers is as follows:

- Roller 1** is the **infeed roller**
- Roller 2** makes the **1st fold**
- Roller 3** makes the **2nd fold**
- Roller 4** makes the **3rd fold**
- Roller 5** makes the **4th fold**
- Roller 6** makes the **5th fold**
- Roller 7** makes the **6th fold**
- Roller W** is the **slitter shaft**

The roller gap can be corrected individually through

- symmetrical adjustment
- asymmetrical adjustment

***Symmetrical adjustment:***

The roller gap is changed in equal steps on the left- and right-hand side.

This adjustment mode is active when **no** tick is visible in the input window „Asymmetrical adjustment“.



Pressing „Asymmetrical adjustment“ initiates the change from symmetrical to asymmetrical setting and vice versa.

**Asymmetrical adjustment:**

The roller gap can be changed individually on the left- and right-hand side. This adjustment mode is activated when a tick becomes visible in the input window „Asymmetrical adjustment“.



Pressing „Asymmetrical adjustment“ initiates the change from asymmetrical to symmetrical setting and vice versa.

**Correction of the roller gap**

The gap can be corrected by means of:

- Arrow keys (minor corrections of the roller gap)
- Input windows (major corrections of the roller gap)

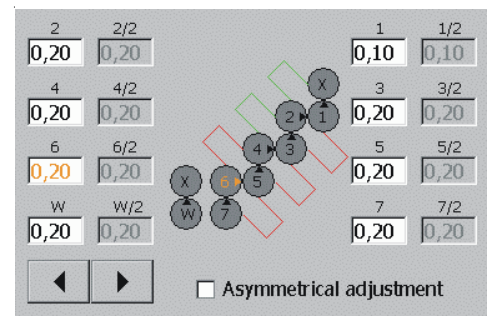
**Correction with arrow keys:**

- Select the fold unit by touching the appropriate symbol.
- Select the roller for which the gap must be changed by touching the appropriate symbol (roller number and matching input window turn orange).
- Keep pressing the arrow key until the desired correction value is reached.

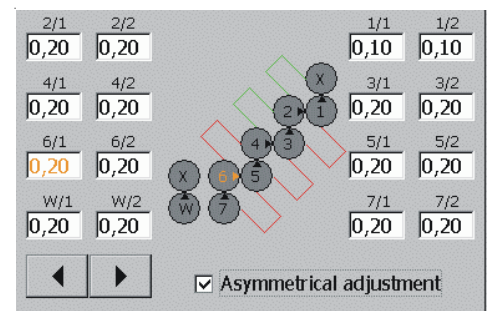


Incorrect entries can be cancelled with the „Undo“ key.

For *symmetrical settings*, the changes of the numerical values will be identical in both input windows.



For *asymmetrical settings*, the numerical value in just one input window will change.



The left input window is meant for setting the left side of the roller.  
The right input window is meant for setting the right side of the roller.



Touch the respective input window for switching from the left to the right side or vice versa.

The keyboard that is being opened can be cleared by touching „X“.

- Touch the „Update“ key when entering the corrections is complete. This command activates the automatic adjustment of all corrections that have been entered.



The „Update“ key can be touched after each individual correction or after changing all corrections.

After the adjustment, keys „Undo“ and „Update“ are no longer active - this is shown by a change of the script color from black to grey.

#### ***Correction with input windows:***

- Select the fold unit by touching the appropriate symbol.
- Select the roller for which the gap has to be corrected by touching the appropriate symbol (roller number and matching input window turn orange).
- Touch the input window.  
Enter the numerical value by means of the keypad now open (in millimeters).



Incorrect entries can be corrected with the „Del“ key.

Calculator functions can be activated with the „Calc“ key.

- Confirm the entry with Enter.  
The keypad disappears after touching Enter and the next roller can be selected.



Incorrect entries can be cancelled with the „Undo“ key.

- When entering the corrections is complete, touch the „Update“ key.  
This command activates the automatic adjustment of all corrections that have been entered.  
The „Update“ key can be touched after each individual correction or after changing all corrections.

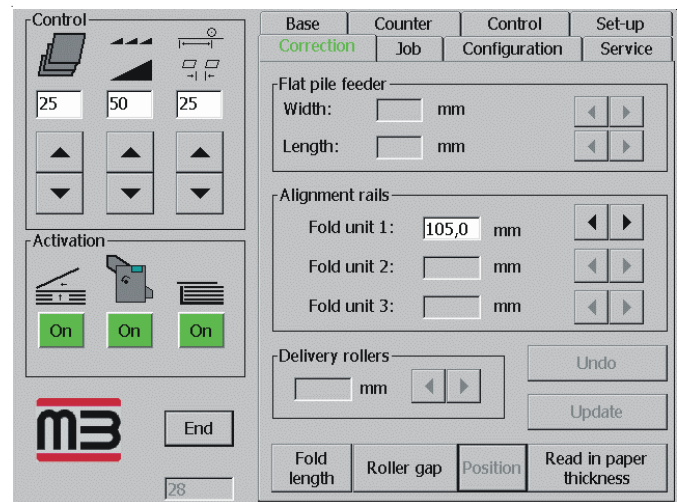


After the adjustment the „Undo“ and „Update“ keys are no longer active - this is displayed by a change of the script color from black to grey.

**Sub-menu „Position“**

In this sub-menu, the following settings can be corrected:

- Flat pile feeder
- Alignment rails
- Delivery rollers



**Correction of flat pile feeder:**

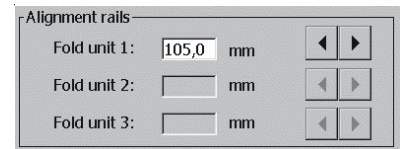
- Width means: Position of side stops (half sheet width)
- Length means: Position of the rear edge separator (entire sheet length)



The numerical values in the input windows provide information about the current setting.

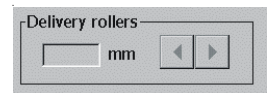
**Correction of alignment rails:**

The number of alignment rails equals the number of the fold units used. The numerical value in the input windows provide information of the current setting.



**Correction of the delivery rollers:**

The position of the delivery rollers in the shingled delivery depends on sheet length and type of fold. The numerical value in the input window provides information about the current setting.



The positions that have been set can be corrected by means of:

- Arrow keys (minor corrections of the positions)
- Input windows (major changes of the positions)

***Corrections with arrow keys:***

- Keep pressing the arrow key until the correction value is reached.



Incorrect entries can be cancelled with the „Undo“ key.

- When entering the corrections is complete, touch the „Update“ key. This command activates the automatic adjustment of all corrections that have been entered.



The „Update“ key can be touched after each individual correction or after changing all corrections.

After the adjustment the „Undo“ and „Update“ key are no longer active - this is displayed by a change of script color from black to grey.

***Correction with input windows:***

- Touch the input window.  
Enter the numerical value by means of the keypad now open (in millimeters).



Incorrect entries can be corrected with the „Del“ key.

Calculator functions can be activated with the „Calc“ key.

- Confirm the entry by touching the **Enter** key.  
The keypad disappears and the next position can be selected.



Incorrect entries can be cancelled with the „Undo“ key.

- When entering the corrections is complete, touch the „Update“ key. This command activates the automatic adjustment of all corrections that have been entered.

The „Update“ key can be touched after each individual correction or after changing all corrections.

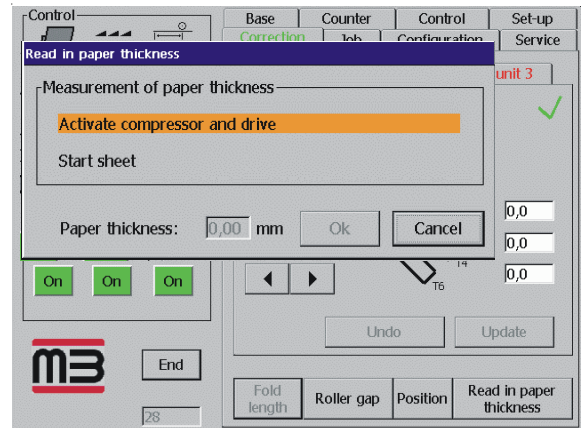


After the adjustment, the „Undo“ and „Update“ keys are no longer active - this is displayed by a change of the script color from black to grey.

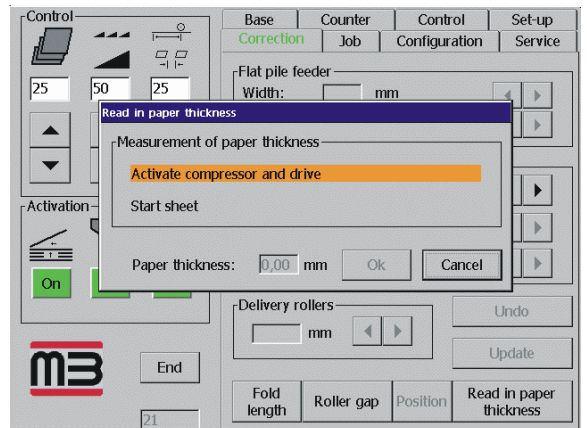
**Sub-menu „Read-in paper thickness“**

During the correction process, the paper thickness can be read-in from every sub-menu. After touching „Read-in paper thickness“, the following display views are possible:

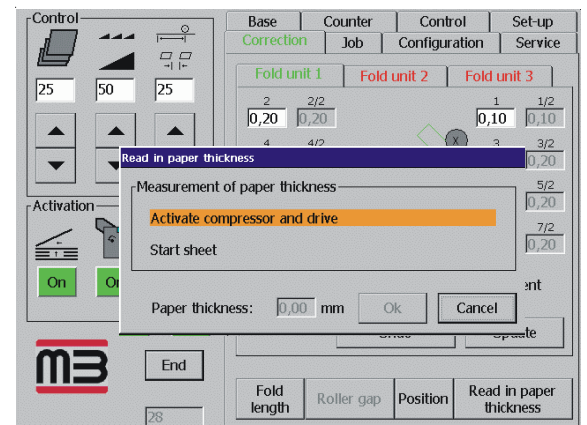
Sub-menu „Fold length“



Sub-menu „Position“



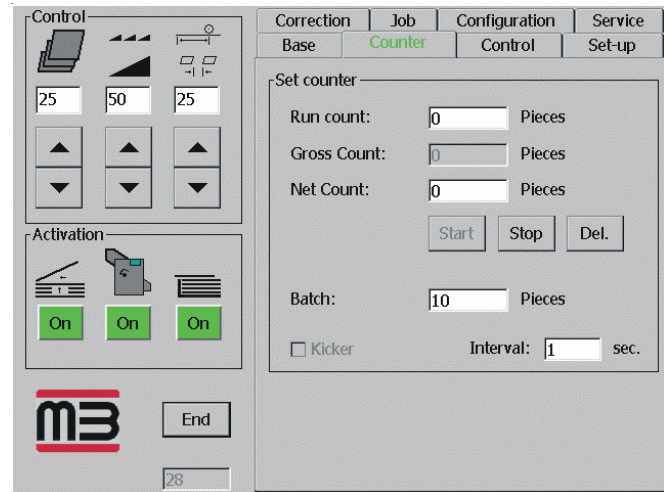
Sub-menu „Roller gap“



## COUNTER Menu

The counter can be set with this menu.  
The following parameters are variable:

- Volume (the machine stops after reaching the run count)
- Net count (this count starts when the counter was activated deliberately by touching the „Start“ key)
- Batch (number of sheets in one batch)
- Interval (length of the sheet gap between batches)



Setting:

- Touch the input window for „Run count“ and, if necessary, „Batch“ and „Interval“. Enter the numerical values by means of the keypad now open.



Incorrect entries can be corrected with the „Del“ key.

Calculator functions can be activated with the „Calc“ key.

- Confirm the entry with „Enter“. The keypad disappears after touching Enter and the next position can be selected.



When entering the batch, one second is the default value as the minimum interval time. Changes can be made using the keypad.



For the „Gross“ count all sheets are counted, including the sheets used for set-up. For this reason, the „Net“ count must not be activated until the set-up process has been completed.  
This guarantees that the number of the sheets coincides with the desired run count when the machine stops automatically after reaching the desired run count.

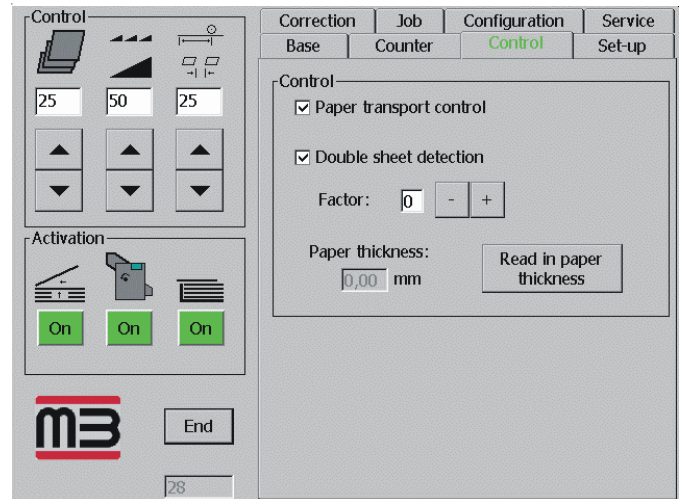
Meaning of the keys:

Start Net count is activated  
Stop Net count is deactivated  
Del Net count is reset

## CONTROL Menu

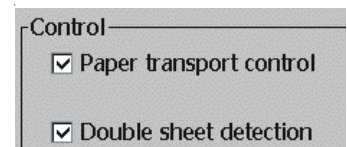
The following control functions can be switched on or off in this menu:

- Paper travel control
- Double sheet control

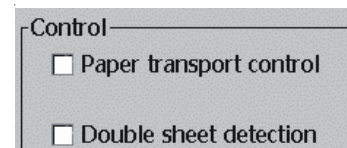


The functions can be activated or deactivated by touching „Paper transport control“ or „Double sheet detection“.

The control functions have been activated if a tick is visible in the input window.



The control functions are deactivated if no tick is visible in the input window.



The measuring function for the double sheet detection is activated by entering a factor which determines the performance of the double sheet detection feature.

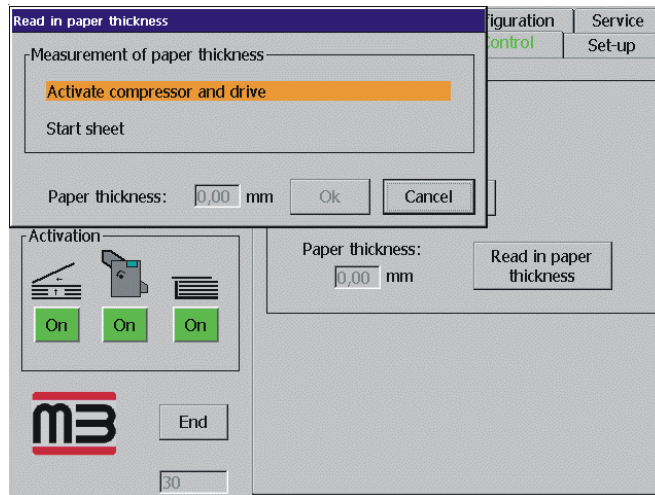
- A higher number causes a late measuring instant. This results in high accuracy since the sensor is back at rest position after touching the paper.
- A lower number causes an early measuring instant. This is less accurate because the sensor is not yet back at rest position after touching the paper.

The factor is set by touching the plus- and minus keys.



The factor to be set should be as large as possible, but depends on sheet length.

In this menu it is also possible to read-in the paper thickness.  
 The following display view comes on after touching the „Read-in paper thickness“ key:

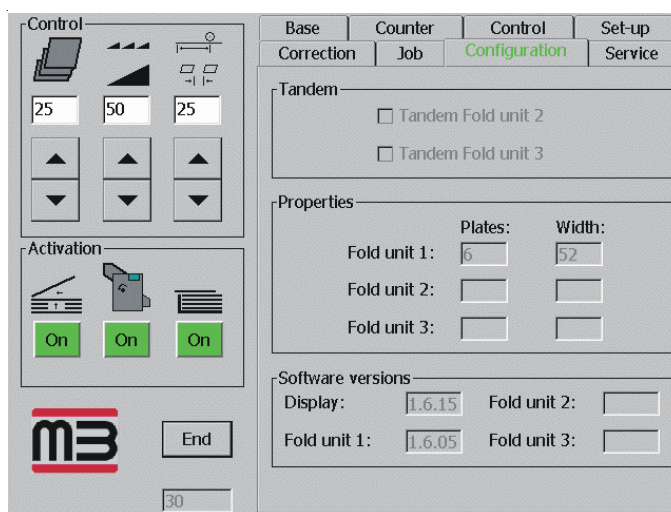


## CONFIGURATION Menu

With the „Configuration“ menu it is possible to switch between the operating modes „Standard“ (right-angle arrangement of the fold units) and „Tandem“ (second or third fold unit is placed in line with respect to the preceding fold unit).

The display provides information about the current state of the hard- and software in the following positions:

- Arrangement of the fold units (tandem/right-angle)
- Number of fold units
- Number of fold plates per fold unit
- Infeed width of the fold units
- Software version



By touching a key it is possible to switch between tandem- and standard operation.

**Standard** (fold units in right-angle arrangement) is set when the display looks as follows:

Tandem Fold unit 2

**Tandem** (fold units in line) is set when the display looks as follows:

Tandem Fold unit 2

In the **BASIC** menu, the red message „Tandem Configuration!“ points to the settings which differ from the standard - provided that the machine is set up for tandem operation.

Job name:	Standard job
Job number:	
<b>Tandem Configuration!</b>	



**Particular features of tandem operation:**

- In the „Set-up“ menu, additional parallel folds are offered under „Standard folds“.
- The alignment rails on the register tables are set to the (original) sheet width.
- When setting the fold rollers it is assumed that a fold is complete only after the sheet has passed the second fold unit (in case of a letter fold, for example, this means that in the second fold unit up to the last fold, the fold rollers are also set to just one paper thickness up to the last fold).

## JOB Menu

With this menu, jobs can be saved and recalled. Individual corrections made during set-up and run will also be saved.

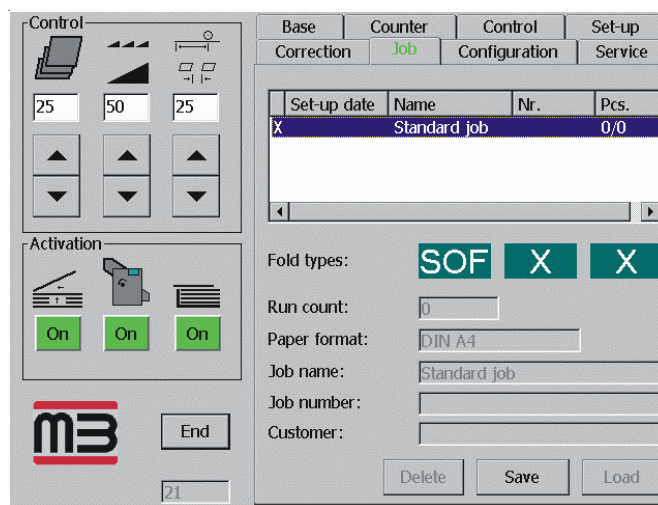


The job should not be saved until all necessary corrections for

- Fold length
  - Sheet gap
  - Roller gap
  - Speed
  - Suction length
  - Shingled delivery
- have been completed.

The saving process is done as follows:

- Touch the „Job“ tab.

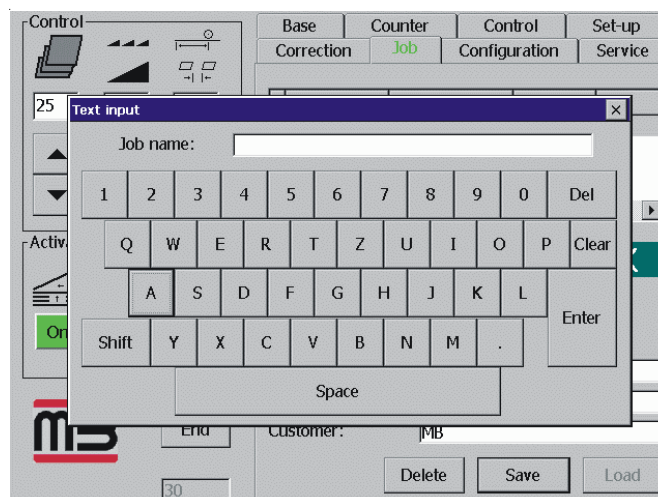


The following information is shown in a window:

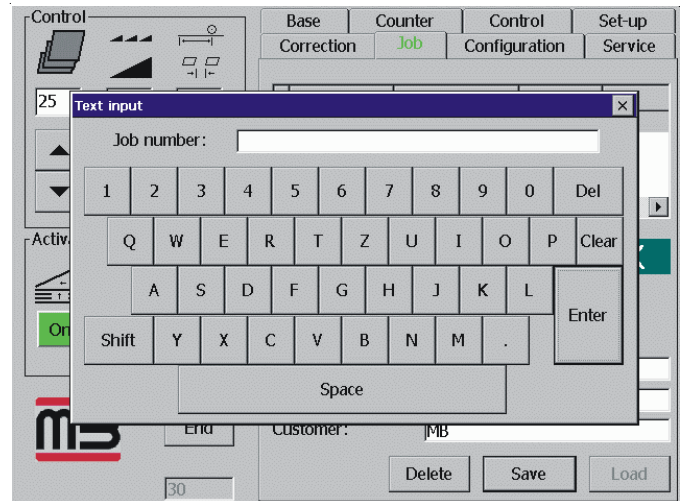
- the current job, which has not yet been saved (it is marked with an **X**, but it still has no date and is called standard job)
- all the jobs that have been saved (with date and name)

- Touch „Standard job“
- Touch the „Save“ key.

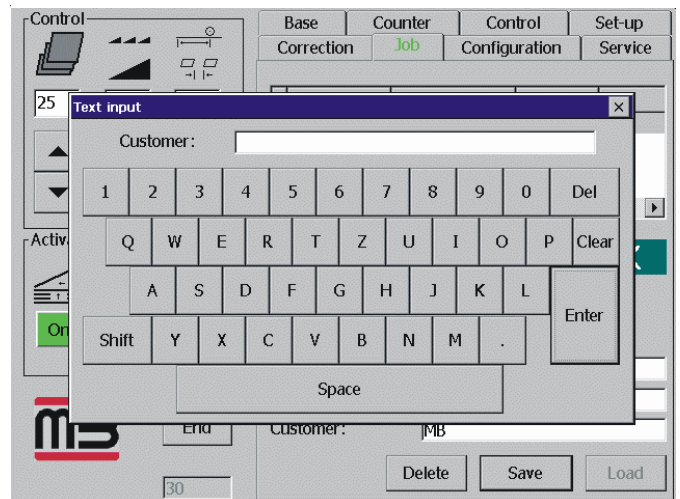
Use the keypad to enter the job name.



- Touch the „Enter“ key on the keypad.
- Use the keypad to enter the job number.



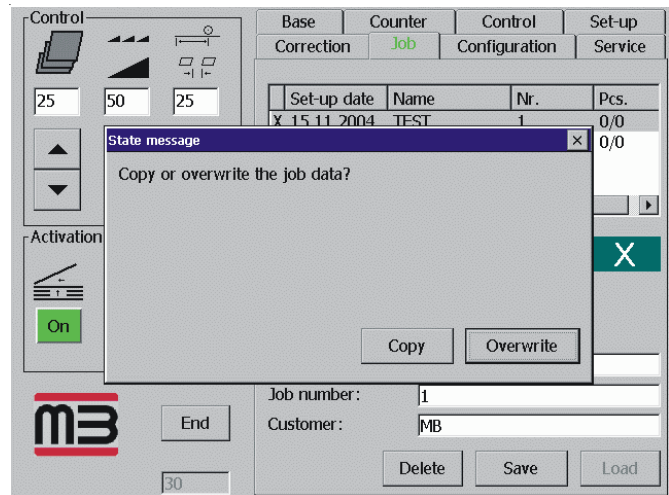
- Touch the „Enter“ key on the keypad.
- Use the keypad to enter the customer name.



- Touch the Enter key on the keypad.

The saving process is complete when date, name and number have been added to the current job (marked with an **X**).  
If individual details of a job are changed (settings, names), these can again be saved.

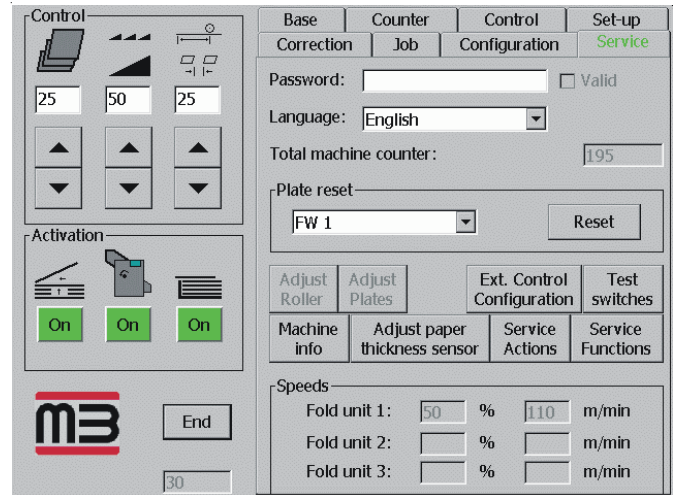
- Touch the „Save“ key.



- Touch the „Copy“ or „Overwrite“ key.

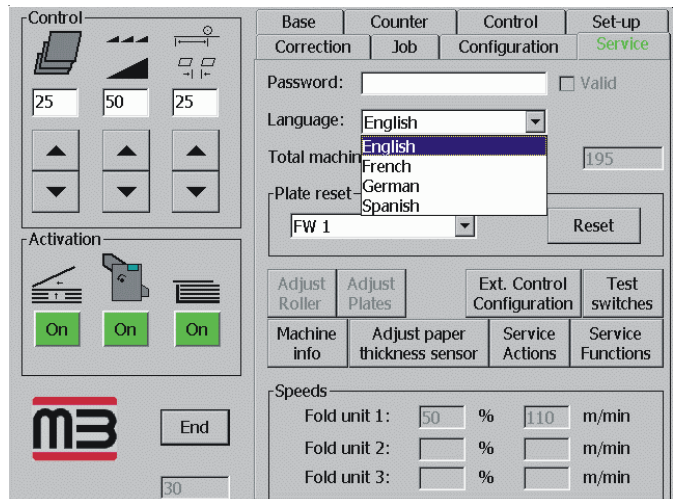
## SERVICE Menu

This menu allows a choice between languages as well as access to special information and setting menus for the service technician.



### Selecting a language

- Touch the language shown in the window „Language“.  
A window with a selection of languages will open.
- Touch the language of your choice.



Access to the service information and service setting menus is only possible after entering a password.