
While every care has been taken in the preparation of this manual, no liability will be accepted by GBR Systems Corporation arising out of any inaccuracies or omissions.

All service documentation is supplied to GBR Systems Corporation external customers for informational purposes only. GBR Systems Corporation service documentation is intended for use by certified, product trained service personnel only. GBR Systems Corporation does not warrant or represent that such documentation is complete. GBR Systems Corporation does not represent or warrant that it will notify or provide to such customer any future changes to this documentation. Customer's service of equipment, or modules, components, or parts of such equipment may void any otherwise applicable GBR Systems Corporation warranties. If Customer services such equipment, modules, components, or parts thereof, Customer releases GBR Systems Corporation from any and all liability for Customer's actions, and Customer agrees to indemnify, defend, and hold GBR Systems Corporation harmless from any third party claims which arise directly or indirectly from such service.

Prepared by:
GBR Systems Corporation
Technical Publications
Copyright 2009 by GBR Systems Corporation. All rights reserved, GBR Systems Corporation.

Copyright protection claimed includes all forms or manner of copyrighted materials and information now allowed by statutory or judicial law or hereinafter granted, including without limitation, material generated from the software programs which are displayed on the screen such as styles, templates, icons, screen displays, looks, etc.

Printed in the United States of America.

TABLE OF CONTENTS

420T V6 AC DISTRIBUTION BLOCK DIAGRAM.....4

420 V6 FUSE CHART.....5

420T DC POWER SUPPLY DISTRIBUTION6

420T V6 DC DISTRIBUTION PCB BOARD7

420T V6 SCHEMATIC, E-STOP/GATE PANEL ASM (USE THIS SCHEMATIC FOR 420T V6 VERS 1 SN: 08090971 & 08090972 ONLY!).....8

420T V6 SCHEMATIC, E-STOP/GATE PANEL ASM (USE THIS SCHEMATIC FOR 420T V6 VERS 2 SN: 08120973 AND ABOVE)9

420T V6LT COMPUTER ASSEMBLY10

420T V6LT F40 LINE CODE READ11

420T V6LT READER BACKPLANE, F4012

420T V6LT INK MARKER DC VERSION.....13

420T V6LT INK MARKER AC VERSION.....14

420T V6LT I/O INTERCONNECT SYSTEM.....15

420T V6LT PORT 0 I/O RACK16

420T V6LT PORT 1 I/O RACK17

420T V6LT PORT 2 I/O RACK18

420T V6LT KEYBOARD, MODULE 5, CABLE 18, 21, 2619

420T V6LT INSERTER MODULE 7, CABLE 1, 5, 6.....20

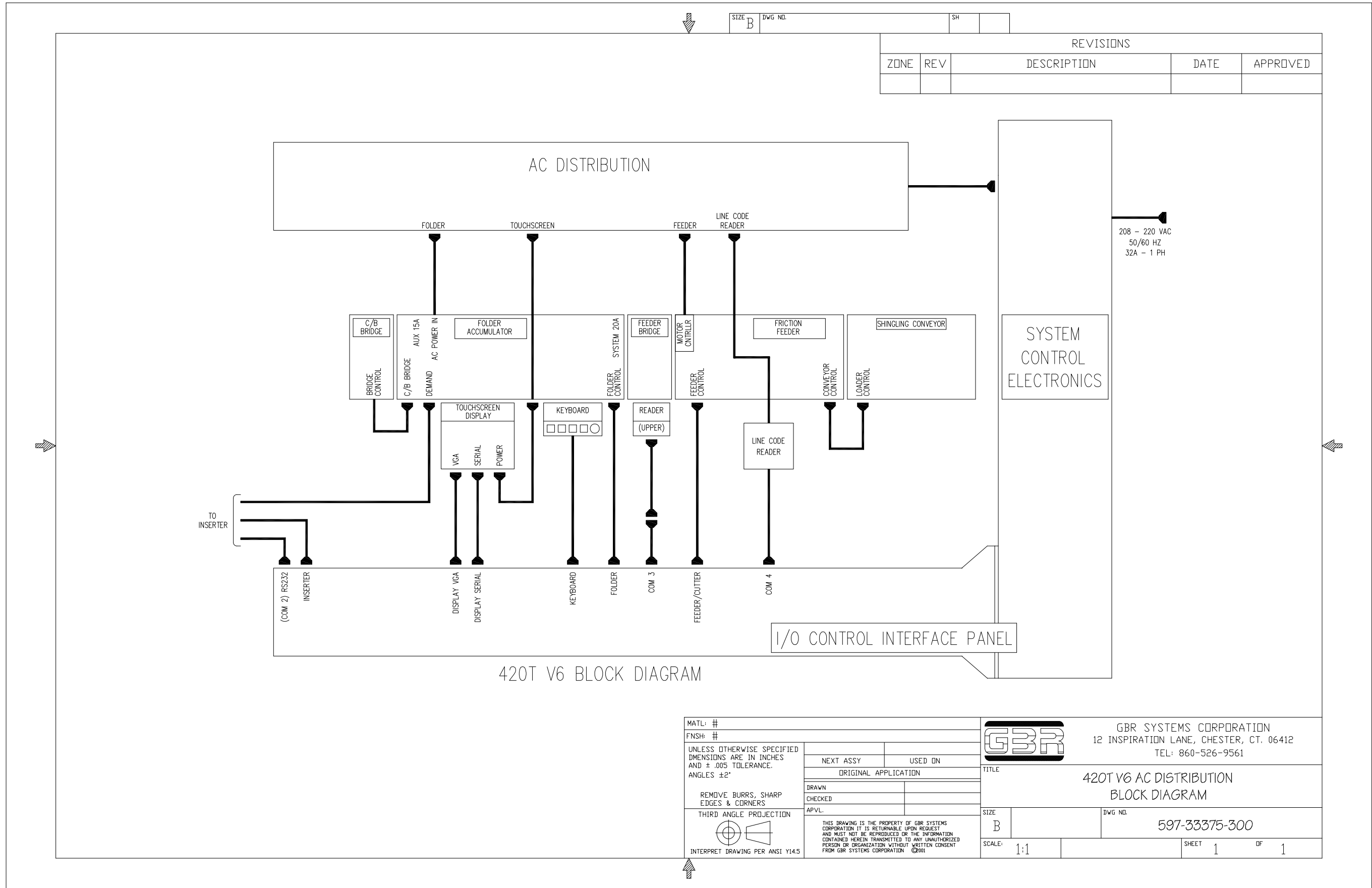
420T V6LT INK MARK KICKER MODULE 9, CABLE 17, 19. 3221

420T V6LT AC/DC UNIVERSAL INTERFACE22

420T V6LT CABLE ASSEMBLY, CONVEYOR, V6, MOD4, CABLE 40, 4123

420T V6LT CPU BOX AC POWER DISTRIBUTION ERROR! BOOKMARK NOT DEFINED.

420T V6 AC DISTRIBUTION BLOCK DIAGRAM



REVISIONS				
ZONE	REV	DESCRIPTION	DATE	APPROVED

420T V6 BLOCK DIAGRAM

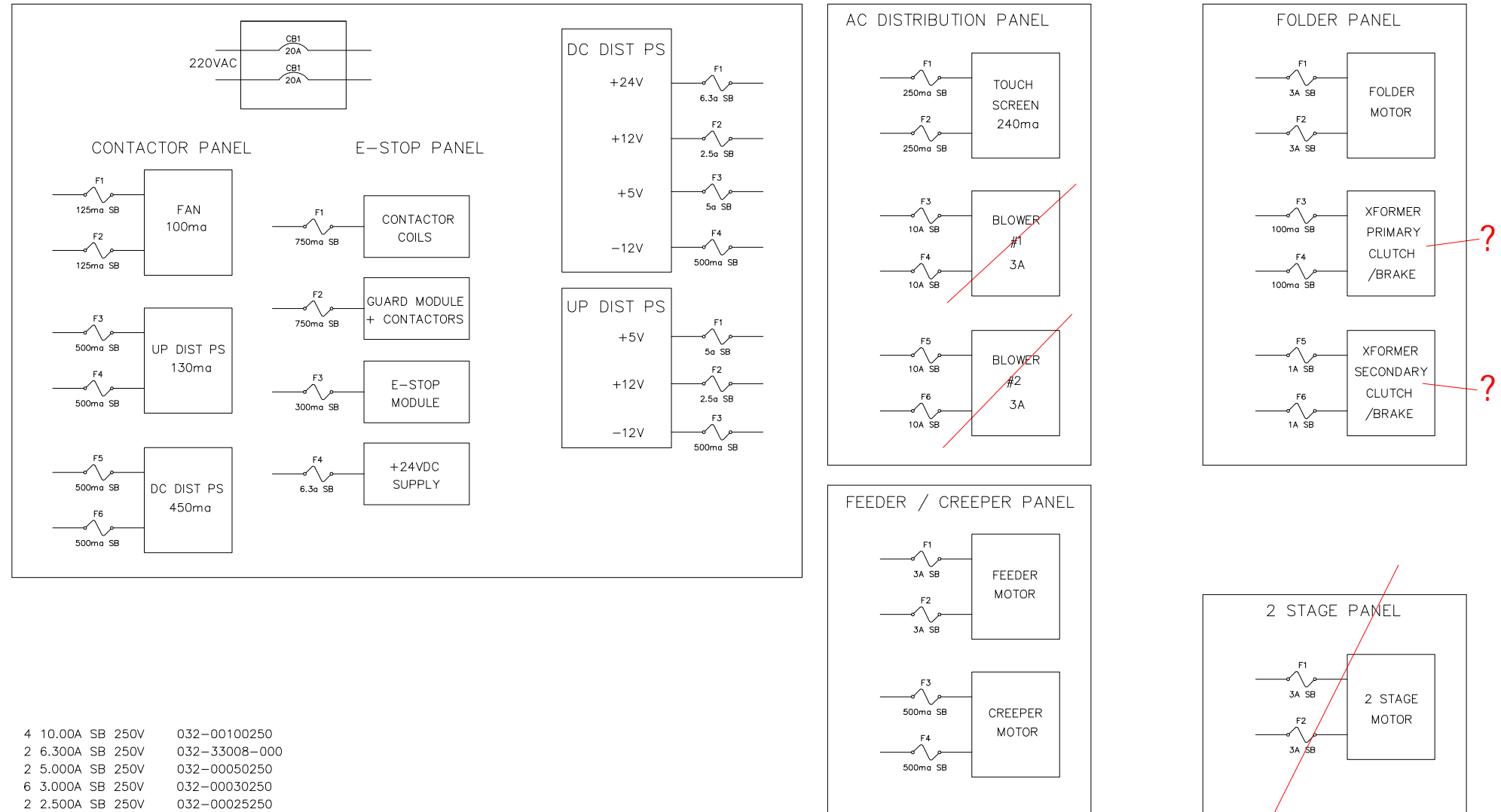
MATL: #		GBR	GBR SYSTEMS CORPORATION 12 INSPIRATION LANE, CHESTER, CT. 06412 TEL: 860-526-9561	
FNSH: #			TITLE 420T V6 AC DISTRIBUTION BLOCK DIAGRAM	
UNLESS OTHERWISE SPECIFIED DIMENSIONS ARE IN INCHES AND ± .005 TOLERANCE. ANGLES ±2°	NEXT ASSY	USED ON	DRAWN	
REMOVE BURRS, SHARP EDGES & CORNERS	ORIGINAL APPLICATION		CHECKED	
THIRD ANGLE PROJECTION	APVL:	SIZE B	DWG NO. 597-33375-300	SCALE: 1:1
INTERPRET DRAWING PER ANSI Y14.5	THIS DRAWING IS THE PROPERTY OF GBR SYSTEMS CORPORATION IT IS RETURNABLE UPON REQUEST AND MUST NOT BE REPRODUCED OR THE INFORMATION CONTAINED HEREIN TRANSMITTED TO ANY UNAUTHORIZED PERSON OR ORGANIZATION WITHOUT WRITTEN CONSENT FROM GBR SYSTEMS CORPORATION ©2001		SHEET 1	OF 1

420 V6 FUSE CHART



SIZE B DWG NO. SH

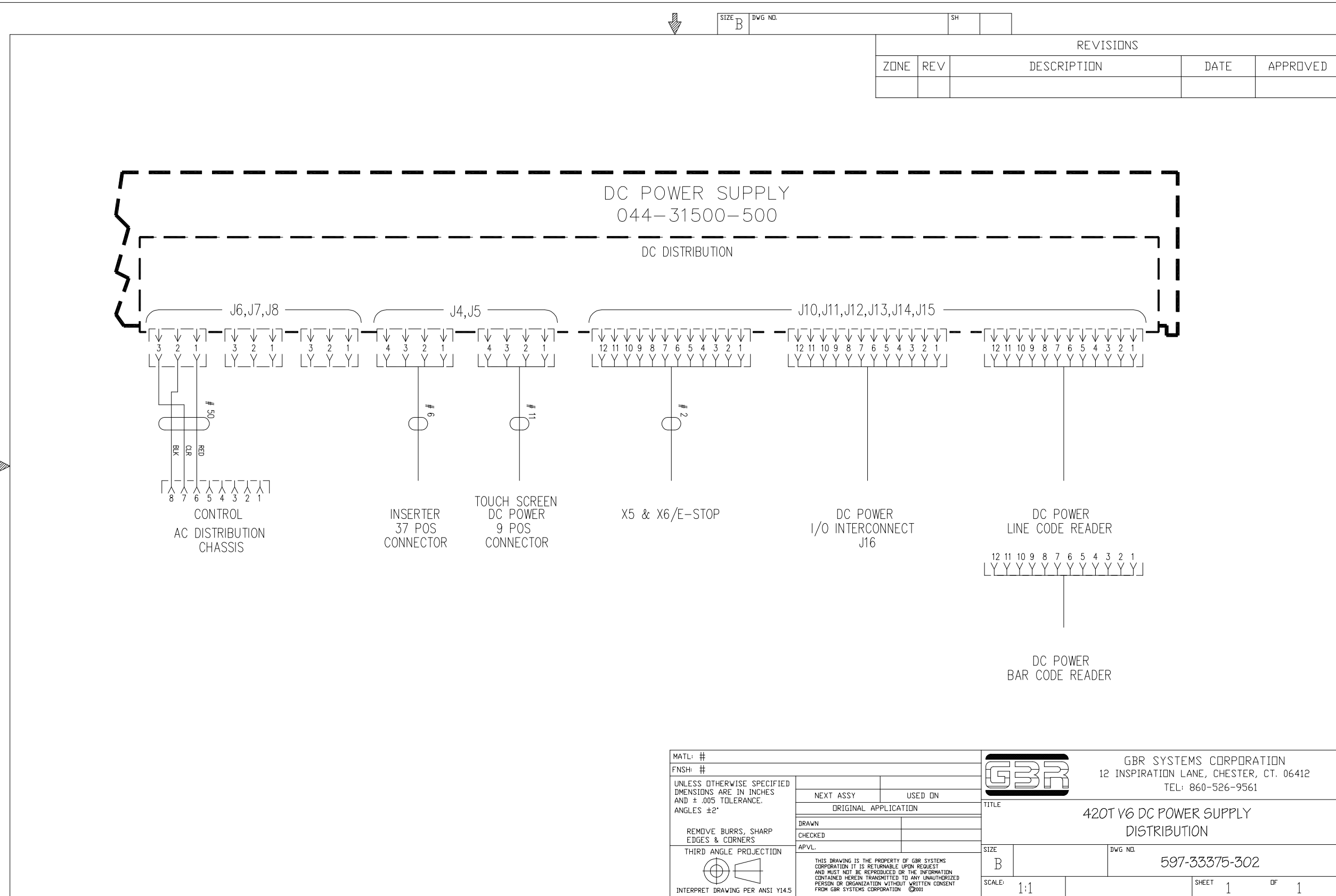
REVISIONS				
ZONE	REV	DESCRIPTION	DATE	APPROVED



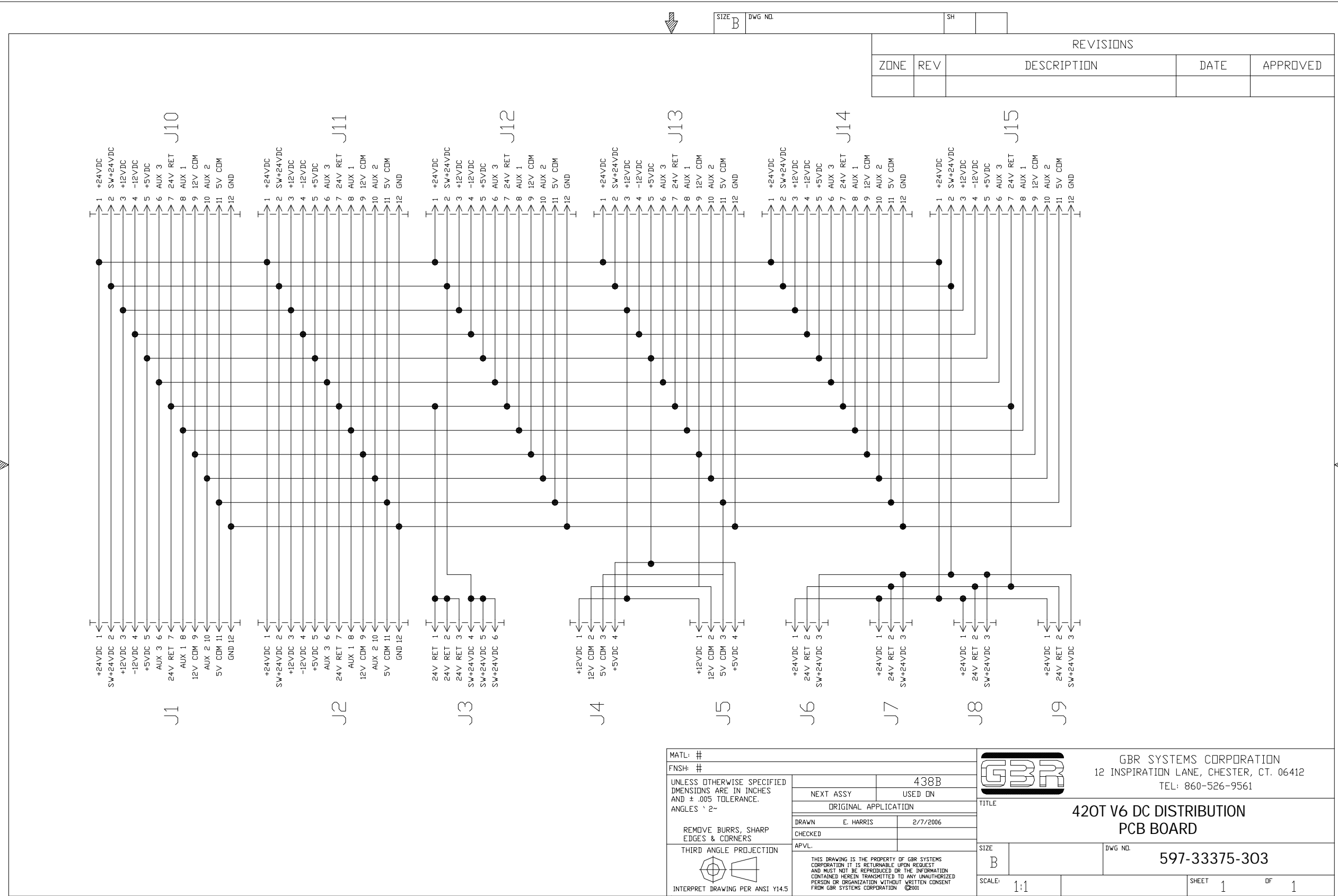
- 4 10.00A SB 250V 032-00100250
- 2 6.300A SB 250V 032-33008-000
- 2 5.000A SB 250V 032-00050250
- 6 3.000A SB 250V 032-00030250
- 2 2.500A SB 250V 032-00025250
- 2 1.000A SB 250V 032-00010250
- 2 750ma SB 250V 032-00075250
- 8 500ma SB 250V 032-00005250
- 1 300ma SB 250V 032-33007-000
- 2 250ma SB 250V 032-00002250
- 2 125ma SB 250V 032-33008-000
- 2 100ma SB 250V 032-33009-000

MATL: #		GBR	GBR SYSTEMS CORPORATION 12 INSPIRATION LANE, CHESTER, CT. 06412 TEL: 860-526-9561	
FNSH: #			TITLE 420T V6 FUSE CHART	
UNLESS OTHERWISE SPECIFIED DIMENSIONS ARE IN INCHES AND ± .005 TOLERANCE. ANGLES ±2°		NEXT ASSY	USED ON	
REMOVE BURRS, SHARP EDGES & CORNERS		ORIGINAL APPLICATION		
THIRD ANGLE PROJECTION		DRAWN	CHECKED	APVL:
 INTERPRET DRAWING PER ANSI Y14.5		THIS DRAWING IS THE PROPERTY OF GBR SYSTEMS CORPORATION IT IS RETURNABLE UPON REQUEST AND MUST NOT BE REPRODUCED OR THE INFORMATION CONTAINED HEREIN TRANSMITTED TO ANY UNAUTHORIZED PERSON OR ORGANIZATION WITHOUT WRITTEN CONSENT FROM GBR SYSTEMS CORPORATION ©2001		
SIZE	B	DWG NO.	597-33375-301	
SCALE:	1:1	SHEET	1	OF 1

420T DC POWER SUPPLY DISTRIBUTION



420T V6 DC DISTRIBUTION PCB BOARD



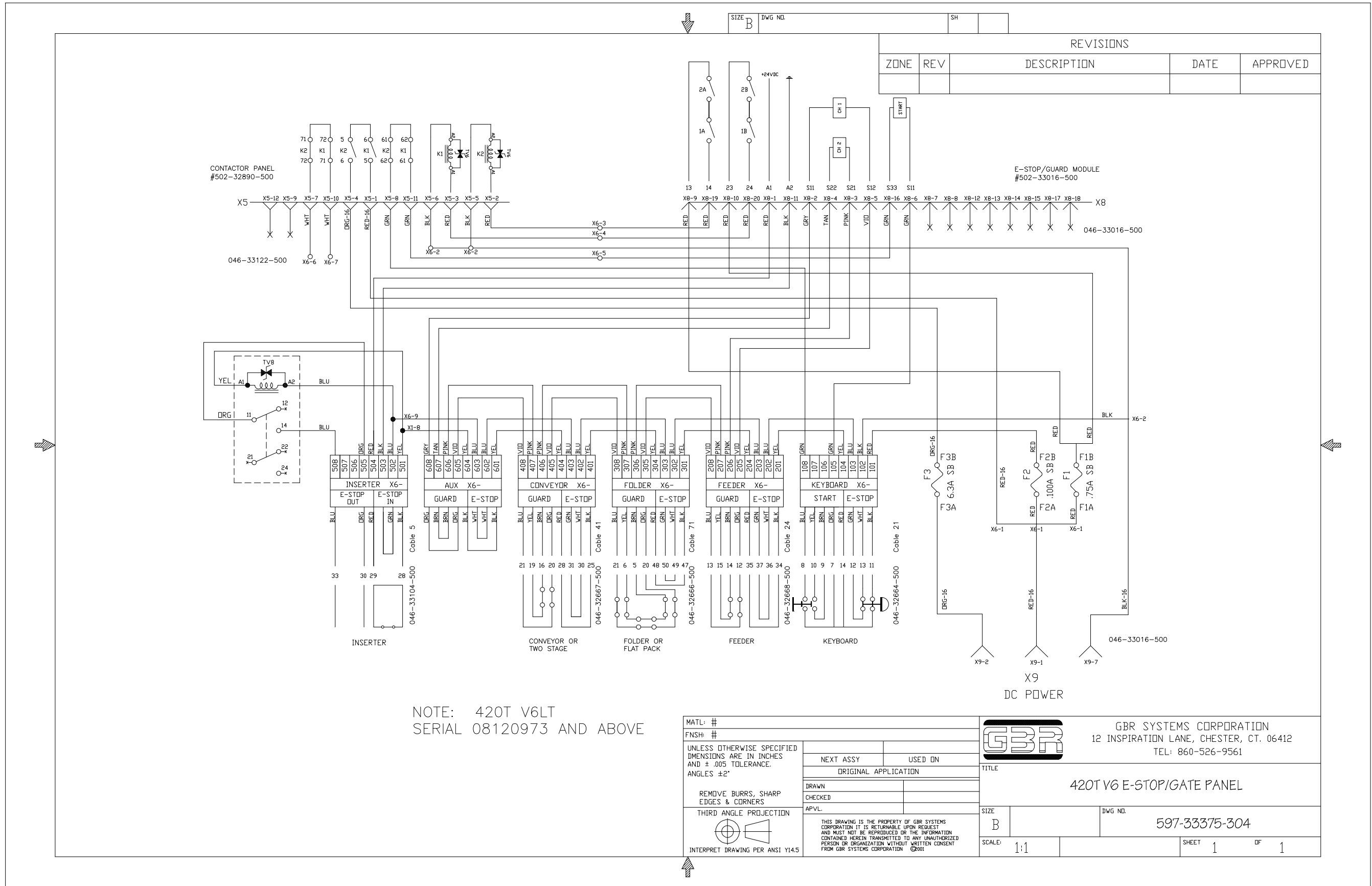
SIZE B DWG NO. SH

REVISIONS				
ZONE	REV	DESCRIPTION	DATE	APPROVED

MATL: #	
FNSH: #	
UNLESS OTHERWISE SPECIFIED DIMENSIONS ARE IN INCHES AND ± .005 TOLERANCE. ANGLES ° 2-	
REMOVE BURRS, SHARP EDGES & CORNERS	
THIRD ANGLE PROJECTION	
INTERPRET DRAWING PER ANSI Y14.5	
NEXT ASSY	438B
USED ON	
ORIGINAL APPLICATION	
DRAWN	E. HARRIS
CHECKED	2/7/2006
APVL.	

	GBR SYSTEMS CORPORATION 12 INSPIRATION LANE, CHESTER, CT. 06412 TEL: 860-526-9561	
	TITLE 420T V6 DC DISTRIBUTION PCB BOARD	
SIZE B	DWG NO. 597-33375-303	
SCALE: 1:1	SHEET 1	OF 1

420T V6 SCHEMATIC, E-STOP/GATE PANEL ASSEMBLY

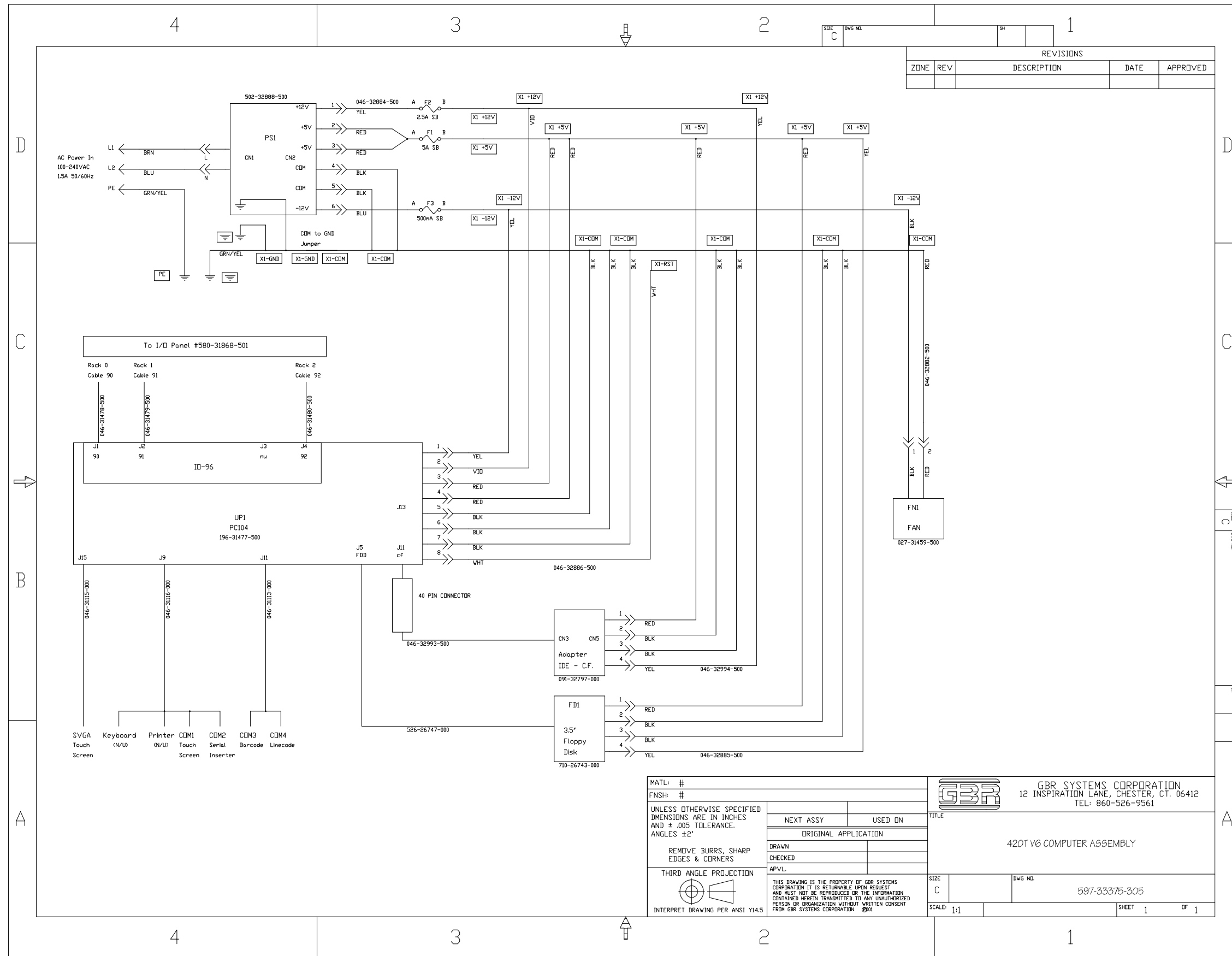


REVISIONS				
ZONE	REV	DESCRIPTION	DATE	APPROVED

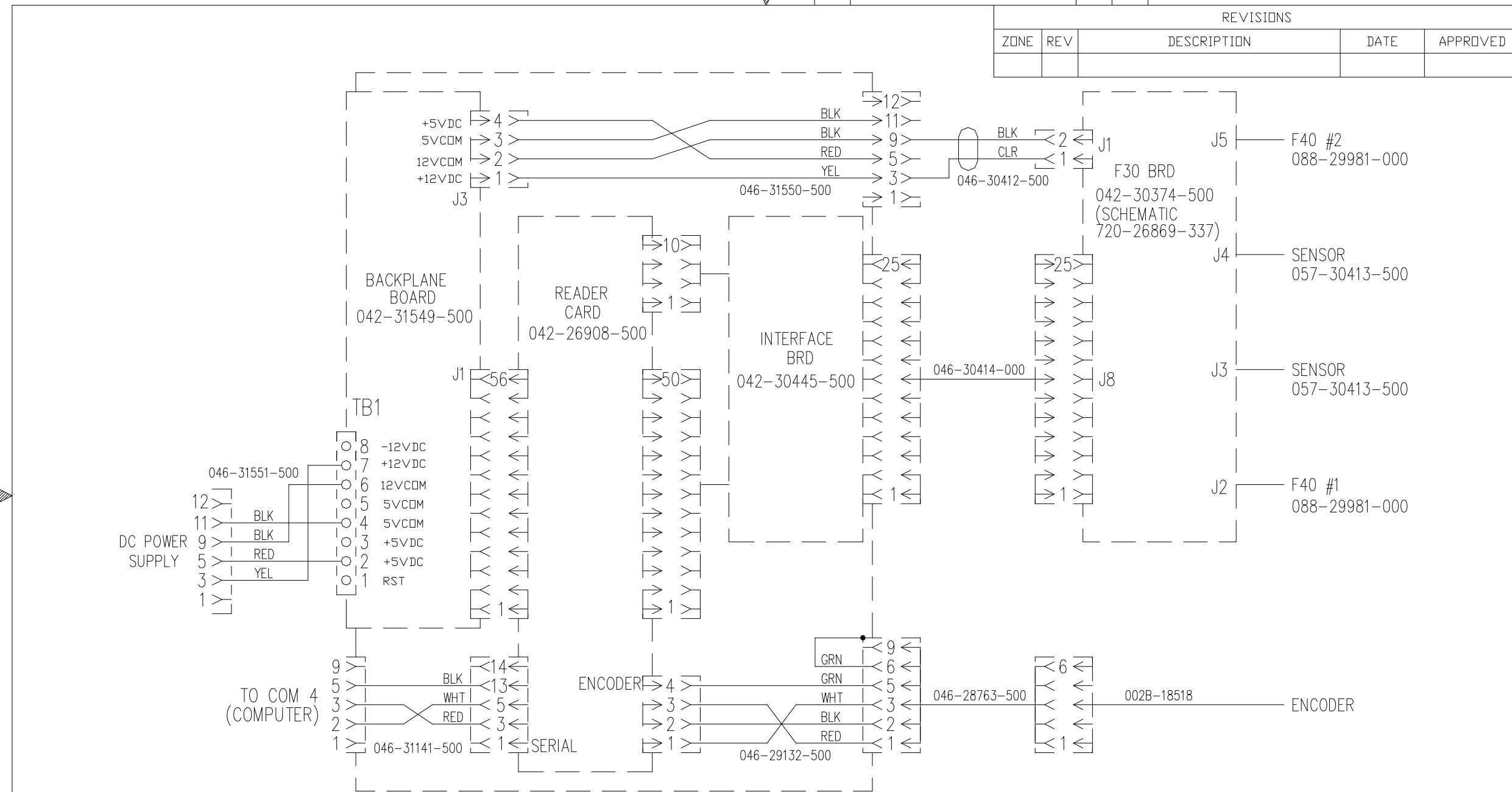
NOTE: 420T V6LT
SERIAL 08120973 AND ABOVE

MATL: #	GBR SYSTEMS CORPORATION 12 INSPIRATION LANE, CHESTER, CT. 06412 TEL: 860-526-9561		
FNSH: #	TITLE 420T V6 E-STOP/GATE PANEL		
UNLESS OTHERWISE SPECIFIED DIMENSIONS ARE IN INCHES AND ± .005 TOLERANCE. ANGLES ±2°	NEXT ASSY	USED ON	SIZE B
REMOVE BURRS, SHARP EDGES & CORNERS	ORIGINAL APPLICATION		DWG NO. 597-33375-304
THIRD ANGLE PROJECTION	DRAWN	CHECKED	SCALE: 1:1
INTERPRET DRAWING PER ANSI Y14.5	APVL:	THIS DRAWING IS THE PROPERTY OF GBR SYSTEMS CORPORATION IT IS RETURNABLE UPON REQUEST AND MUST NOT BE REPRODUCED OR THE INFORMATION CONTAINED HEREIN TRANSMITTED TO ANY UNAUTHORIZED PERSON OR ORGANIZATION WITHOUT WRITTEN CONSENT FROM GBR SYSTEMS CORPORATION ©2001	SHEET 1 OF 1

420T V6 SCHEMATIC, COMPUTER ASSEMBLY



420T V6LT LINE CODE READ F40



REVISIONS				
ZONE	REV	DESCRIPTION	DATE	APPROVED

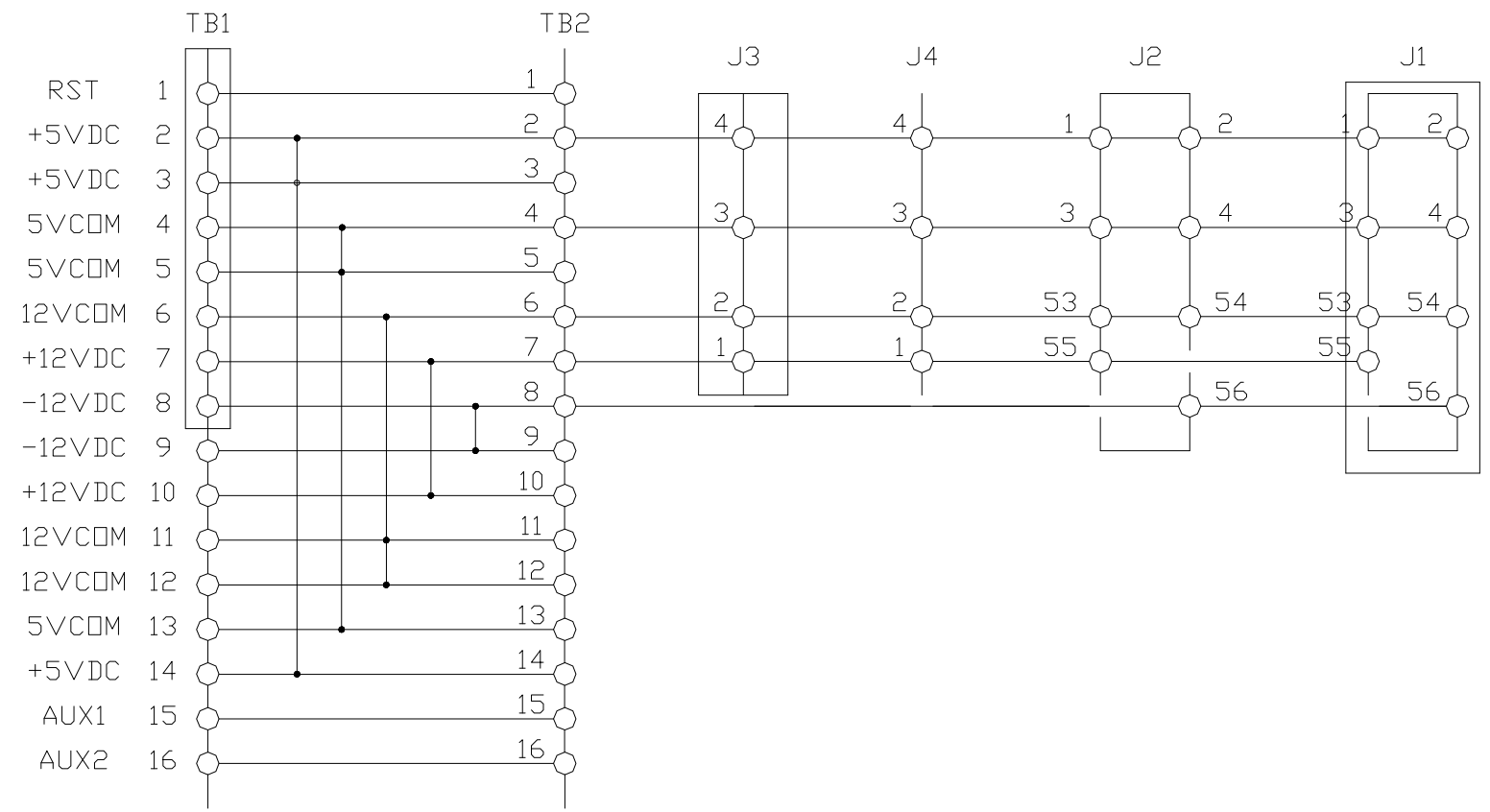
USE THIS SCHEMATIC FOR 420T V6LT VERS 1 SN: 08090971 & 08090972 ONLY!!

MATL: #	GBR SYSTEMS CORPORATION 12 INSPIRATION LANE, CHESTER, CT. 06412 TEL: 860-526-9561	
FNSH: #	TITLE 420T V6 LINE CODE READ F40	
UNLESS OTHERWISE SPECIFIED DIMENSIONS ARE IN INCHES AND ± .005 TOLERANCE. ANGLES ±2°	NEXT ASSY	USED ON
REMOVE BURRS, SHARP EDGES & CORNERS	ORIGINAL APPLICATION	
THIRD ANGLE PROJECTION	DRAWN	CHECKED
APVL:	APVL:	
THIS DRAWING IS THE PROPERTY OF GBR SYSTEMS CORPORATION IT IS RETURNABLE UPON REQUEST AND MUST NOT BE REPRODUCED OR THE INFORMATION CONTAINED HEREIN TRANSMITTED TO ANY UNAUTHORIZED PERSON OR ORGANIZATION WITHOUT WRITTEN CONSENT FROM GBR SYSTEMS CORPORATION ©2001	SIZE B	DWG NO. 597-33375-306
INTERPRET DRAWING PER ANSI Y14.5	SCALE: 1:1	SHEET 1 OF 1


420T V6LT READER BACKPLANE F40

SIZE B DWG NO. SH

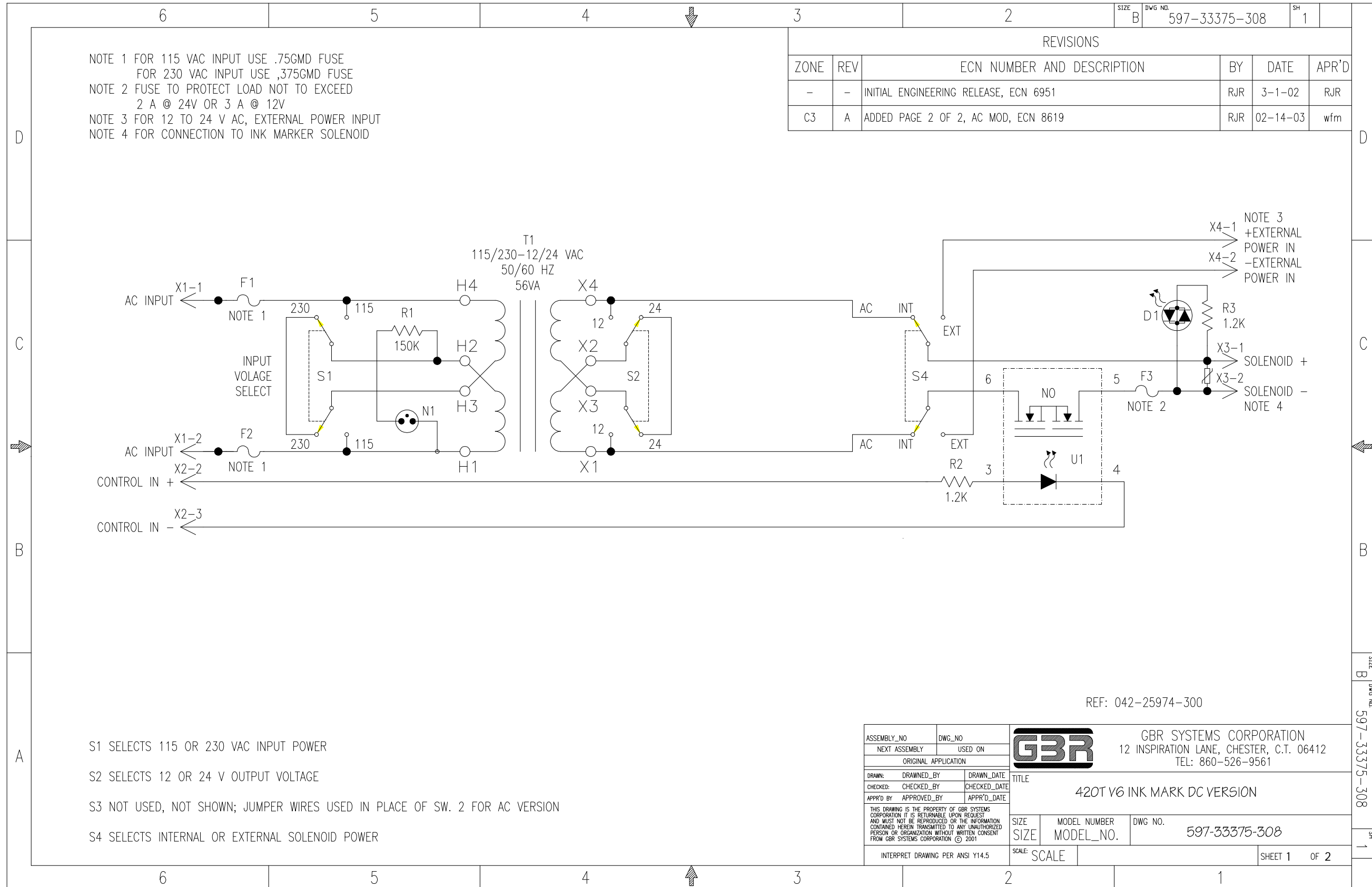
REVISIONS				
ZONE	REV	DESCRIPTION	DATE	APPROVED



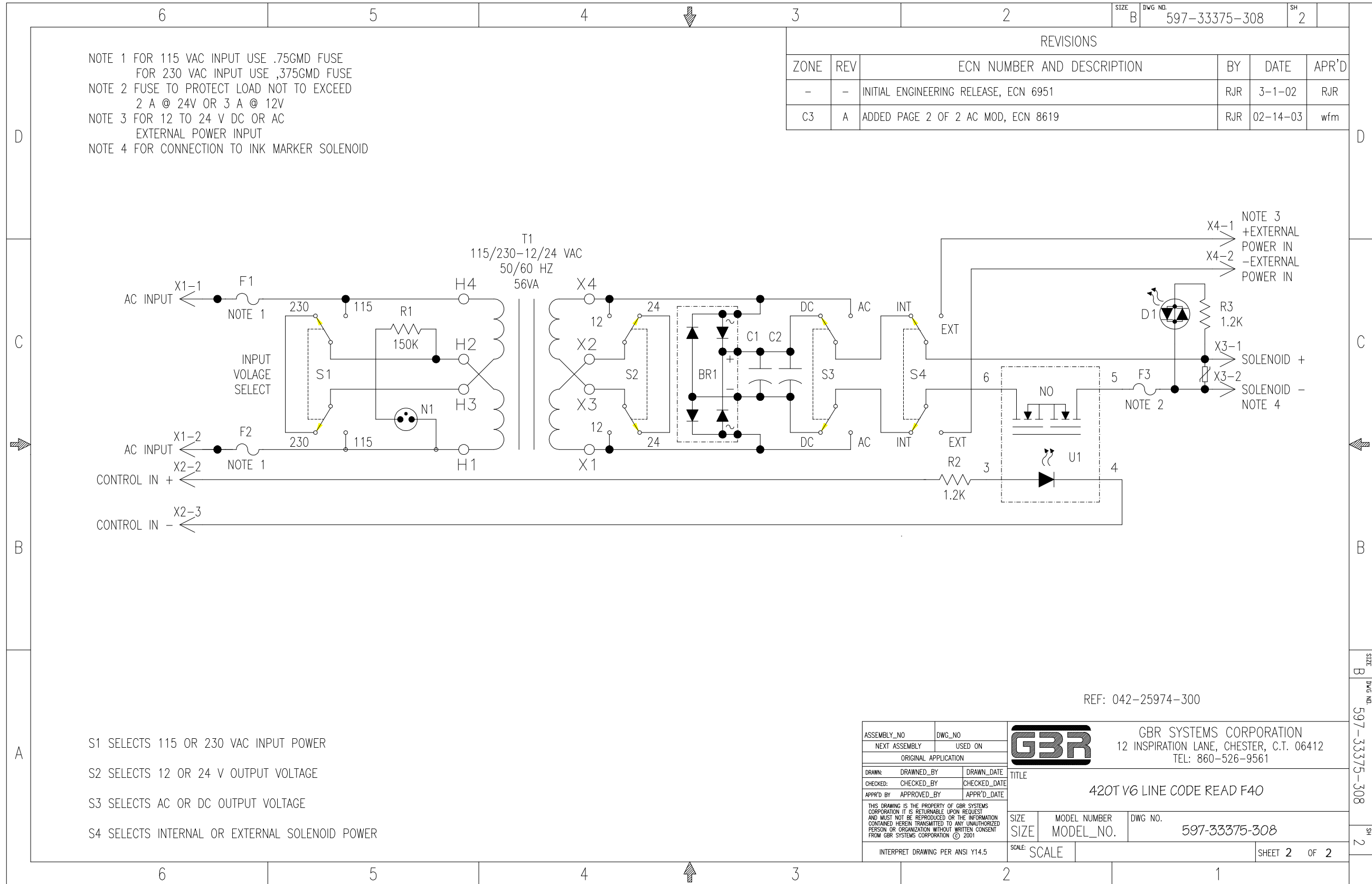
MATL: #	
FNSH: #	
UNLESS OTHERWISE SPECIFIED DIMENSIONS ARE IN INCHES AND ± .005 TOLERANCE. ANGLES ±2°	438B
REMOVE BURRS, SHARP EDGES & CORNERS	NEXT ASSY USED ON
THIRD ANGLE PROJECTION	ORIGINAL APPLICATION
INTERPRET DRAWING PER ANSI Y14.5	DRAWN E. HARRIS 2/7/2006
	CHECKED
	APVL.
	THIS DRAWING IS THE PROPERTY OF GBR SYSTEMS CORPORATION IT IS RETURNABLE UPON REQUEST AND MUST NOT BE REPRODUCED OR THE INFORMATION CONTAINED HEREIN TRANSMITTED TO ANY UNAUTHORIZED PERSON OR ORGANIZATION WITHOUT WRITTEN CONSENT FROM GBR SYSTEMS CORPORATION ©2001

		GBR SYSTEMS CORPORATION 12 INSPIRATION LANE, CHESTER, CT. 06412 TEL: 860-526-9561	
		TITLE	
		READER BACKPLANE, F40	
SIZE	B	DWG NO.	597-33375-307
SCALE:	1:1	SHEET	1 OF 1

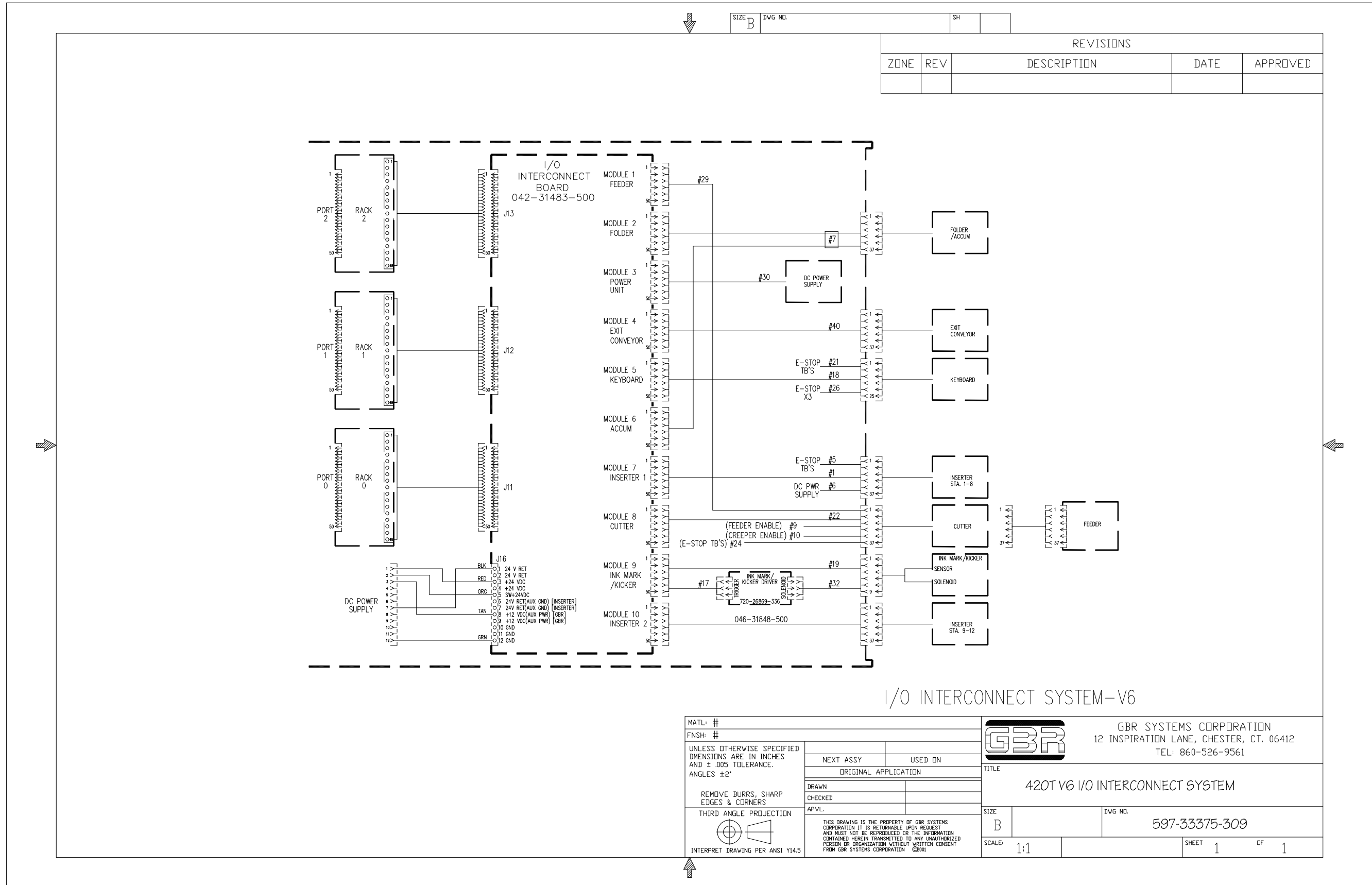
420T V6LT INK MARK DC VERSION



420T V6LT INK MARK AC VERSION



420T V6LT IO INTERCONNECT

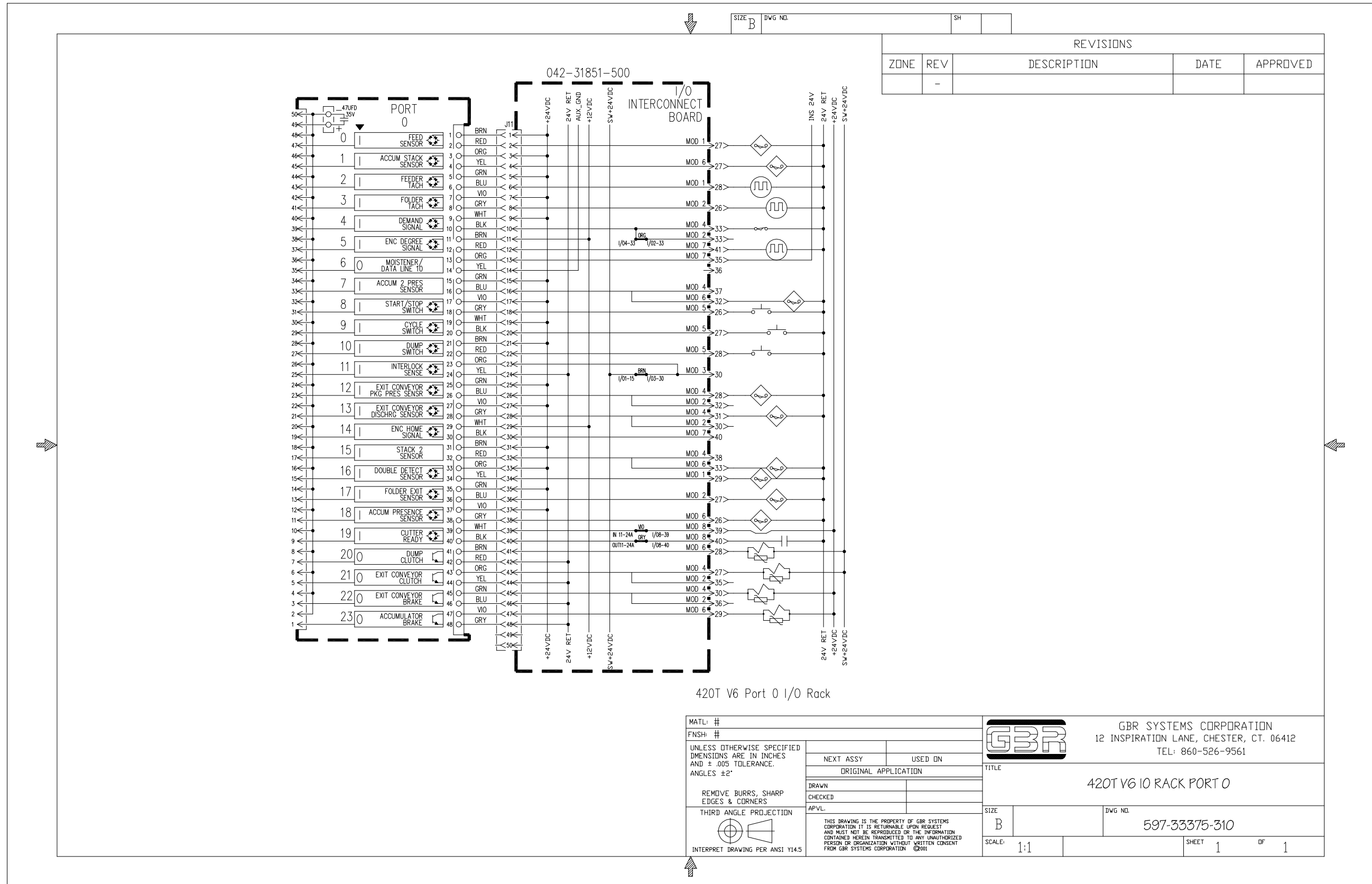


REVISIONS				
ZONE	REV	DESCRIPTION	DATE	APPROVED

I/O INTERCONNECT SYSTEM-V6

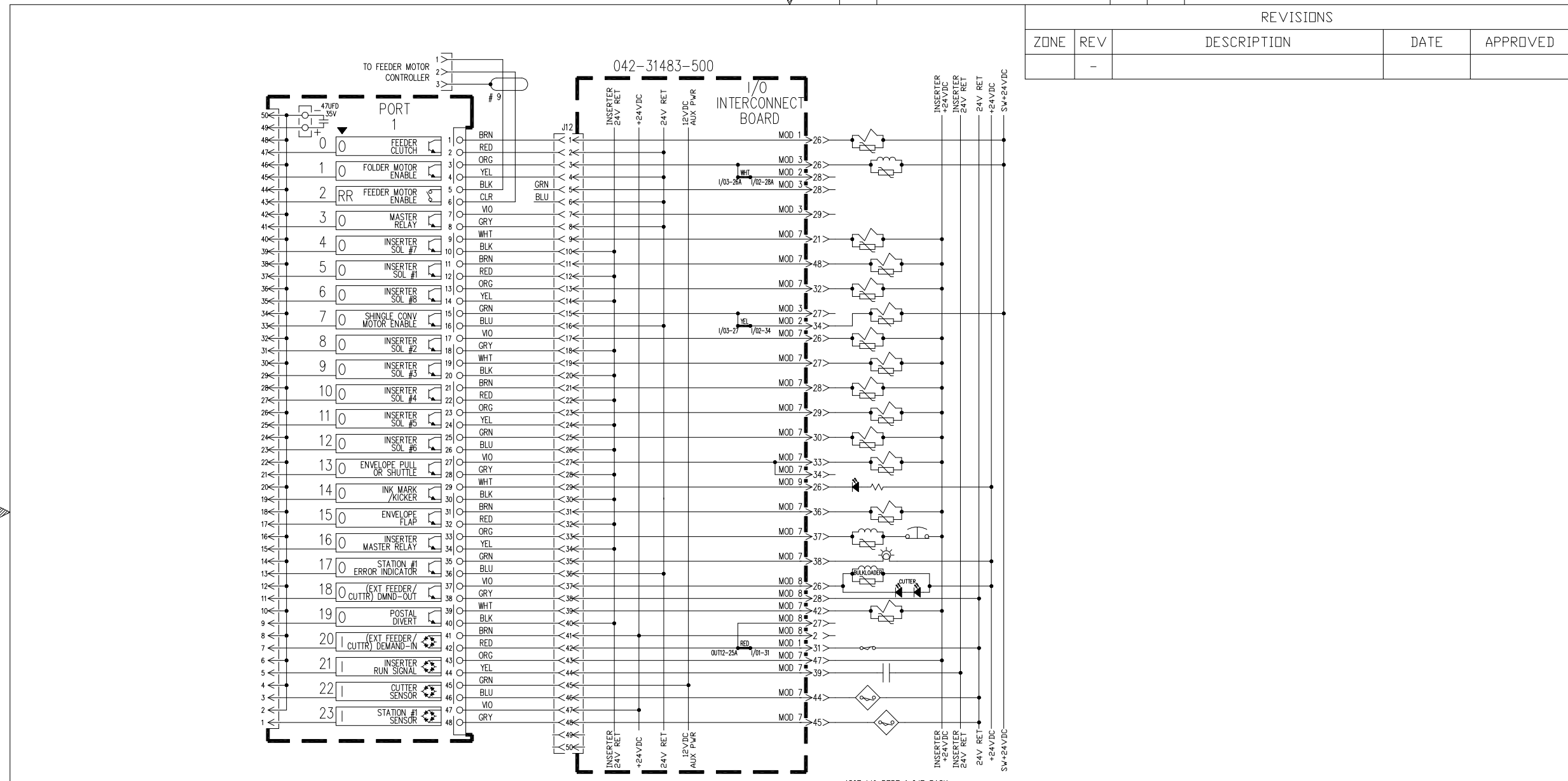
MATL: #	GBR SYSTEMS CORPORATION 12 INSPIRATION LANE, CHESTER, CT. 06412 TEL: 860-526-9561	
FNSH: #	TITLE 420T V6 I/O INTERCONNECT SYSTEM	
UNLESS OTHERWISE SPECIFIED DIMENSIONS ARE IN INCHES AND ± .005 TOLERANCE. ANGLES ±2°	NEXT ASSY	USED ON
REMOVE BURRS, SHARP EDGES & CORNERS	ORIGINAL APPLICATION	
THIRD ANGLE PROJECTION	DRAWN	CHECKED
INTERPRET DRAWING PER ANSI Y14.5	APVL.	APVL.
THIS DRAWING IS THE PROPERTY OF GBR SYSTEMS CORPORATION IT IS RETURNABLE UPON REQUEST AND MUST NOT BE REPRODUCED OR THE INFORMATION CONTAINED HEREIN TRANSMITTED TO ANY UNAUTHORIZED PERSON OR ORGANIZATION WITHOUT WRITTEN CONSENT FROM GBR SYSTEMS CORPORATION ©2001	SIZE B	DWG NO. 597-33375-309
	SCALE: 1:1	SHEET 1 OF 1

420T V6LT IO RACK PORT 0





MATL: #		GBR	GBR SYSTEMS CORPORATION 12 INSPIRATION LANE, CHESTER, CT. 06412 TEL: 860-526-9561	
FNISH: #			TITLE 420T V6 IO RACK PORT 0	
UNLESS OTHERWISE SPECIFIED DIMENSIONS ARE IN INCHES AND ± .005 TOLERANCE. ANGLES ±2°	NEXT ASSY	USED ON	DRAWN	
REMOVE BURRS, SHARP EDGES & CORNERS	ORIGINAL APPLICATION		CHECKED	APVL
THIRD ANGLE PROJECTION	THIS DRAWING IS THE PROPERTY OF GBR SYSTEMS CORPORATION IT IS RETURNABLE UPON REQUEST AND MUST NOT BE REPRODUCED OR THE INFORMATION CONTAINED HEREIN TRANSMITTED TO ANY UNAUTHORIZED PERSON OR ORGANIZATION WITHOUT WRITTEN CONSENT FROM GBR SYSTEMS CORPORATION ©2001		SIZE B	DWG NO. 597-33375-310
INTERPRET DRAWING PER ANSI Y14.5	SCALE: 1:1		SHEET 1	OF 1

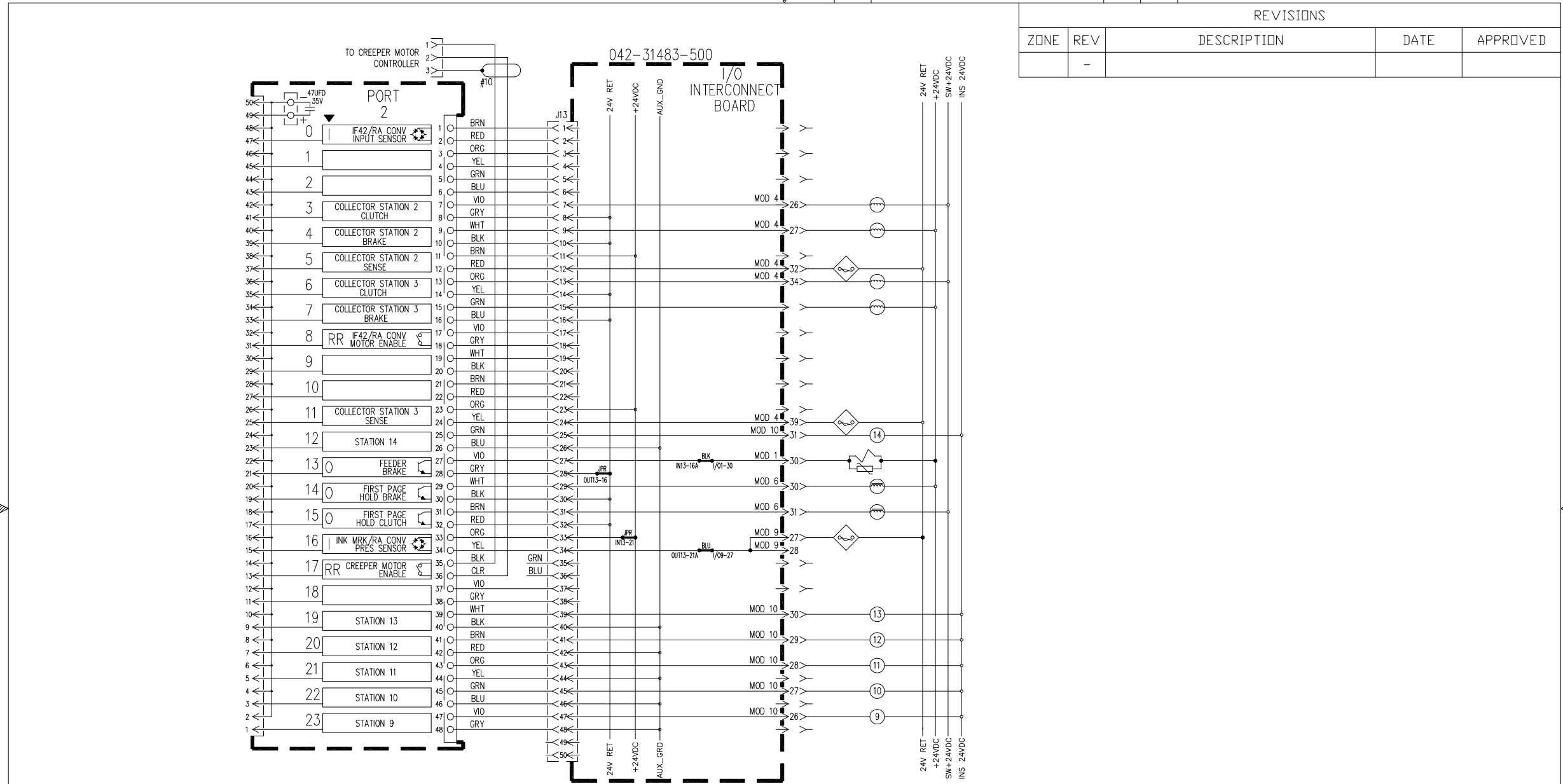
420T V6LT IO RACK PORT 1



420T V6 PORT 1 I/O RACK

MATL: #			GBR SYSTEMS CORPORATION 12 INSPIRATION LANE, CHESTER, CT. 06412 TEL: 860-526-9561	
FNSH: #			TITLE 420T V6 IO RACK PORT 1	
UNLESS OTHERWISE SPECIFIED DIMENSIONS ARE IN INCHES AND ±.005 TOLERANCE. ANGLES ±2°		NEXT ASSY USED ON ORIGINAL APPLICATION	DRAWN CHECKED APVL.	
REMOVE BURRS, SHARP EDGES & CORNERS THIRD ANGLE PROJECTION  INTERPRET DRAWING PER ANSI Y14.5		THIS DRAWING IS THE PROPERTY OF GBR SYSTEMS CORPORATION IT IS RETURNABLE UPON REQUEST AND MUST NOT BE REPRODUCED OR THE INFORMATION CONTAINED HEREIN TRANSMITTED TO ANY UNAUTHORIZED PERSON OR ORGANIZATION WITHOUT WRITTEN CONSENT FROM GBR SYSTEMS CORPORATION ©2001		
		SIZE B	DWG NO. 597-33375-311	SCALE: 1:1 SHEET 1 OF 1

420T V6LT IO RACK PORT 2

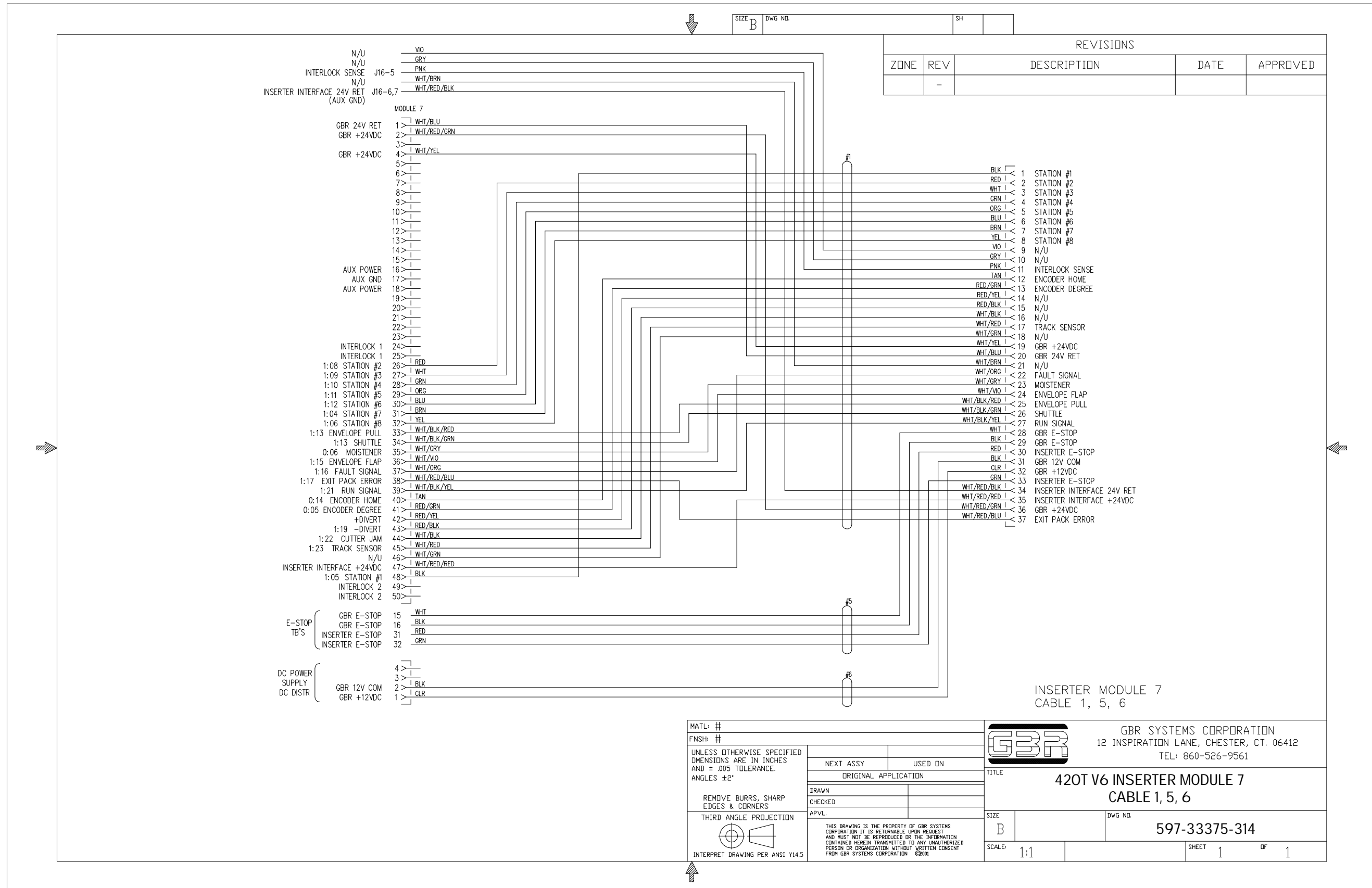


REVISIONS				
ZONE	REV	DESCRIPTION	DATE	APPROVED
	-			

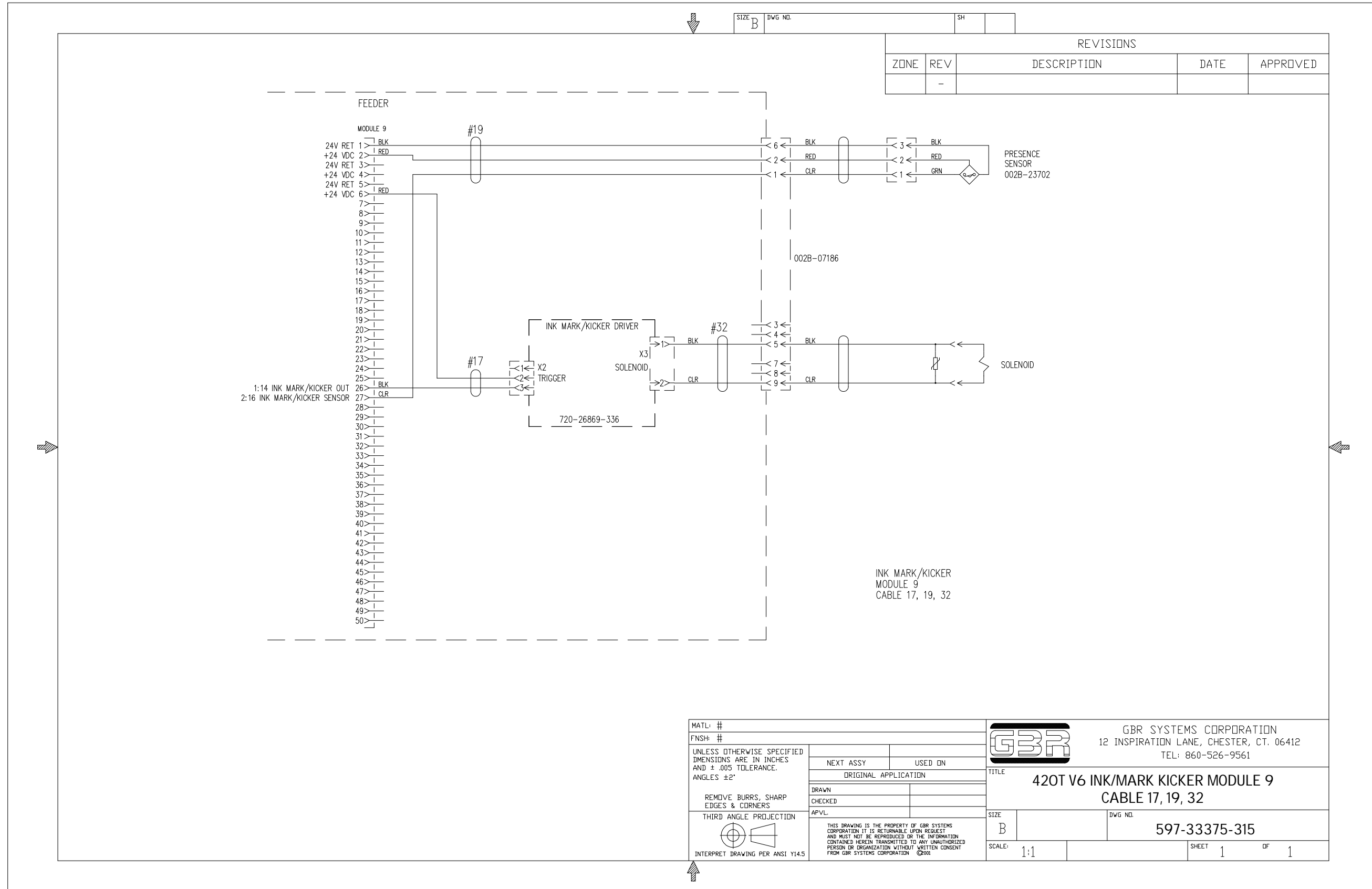
420T V6 IO RACK PORT 2

MATL: #			GBR SYSTEMS CORPORATION 12 INSPIRATION LANE, CHESTER, CT. 06412 TEL: 860-526-9561	
FNSH: #			TITLE 420T V6 IO RACK PORT 2	
UNLESS OTHERWISE SPECIFIED DIMENSIONS ARE IN INCHES AND ± .005 TOLERANCE. ANGLES ±2°	NEXT ASSY USED ON ORIGINAL APPLICATION	DRAWN CHECKED APVL.		
REMOVE BURRS, SHARP EDGES & CORNERS	THIRD ANGLE PROJECTION 	THIS DRAWING IS THE PROPERTY OF GBR SYSTEMS CORPORATION IT IS RETURNABLE UPON REQUEST AND MUST NOT BE REPRODUCED OR THE INFORMATION CONTAINED HEREIN TRANSMITTED TO ANY UNAUTHORIZED PERSON OR ORGANIZATION WITHOUT WRITTEN CONSENT FROM GBR SYSTEMS CORPORATION ©2001		
INTERPRET DRAWING PER ANSI Y14.5	SIZE B	DWG NO.	597-33375-312	
	SCALE: 1:1	SHEET	1	OF 1

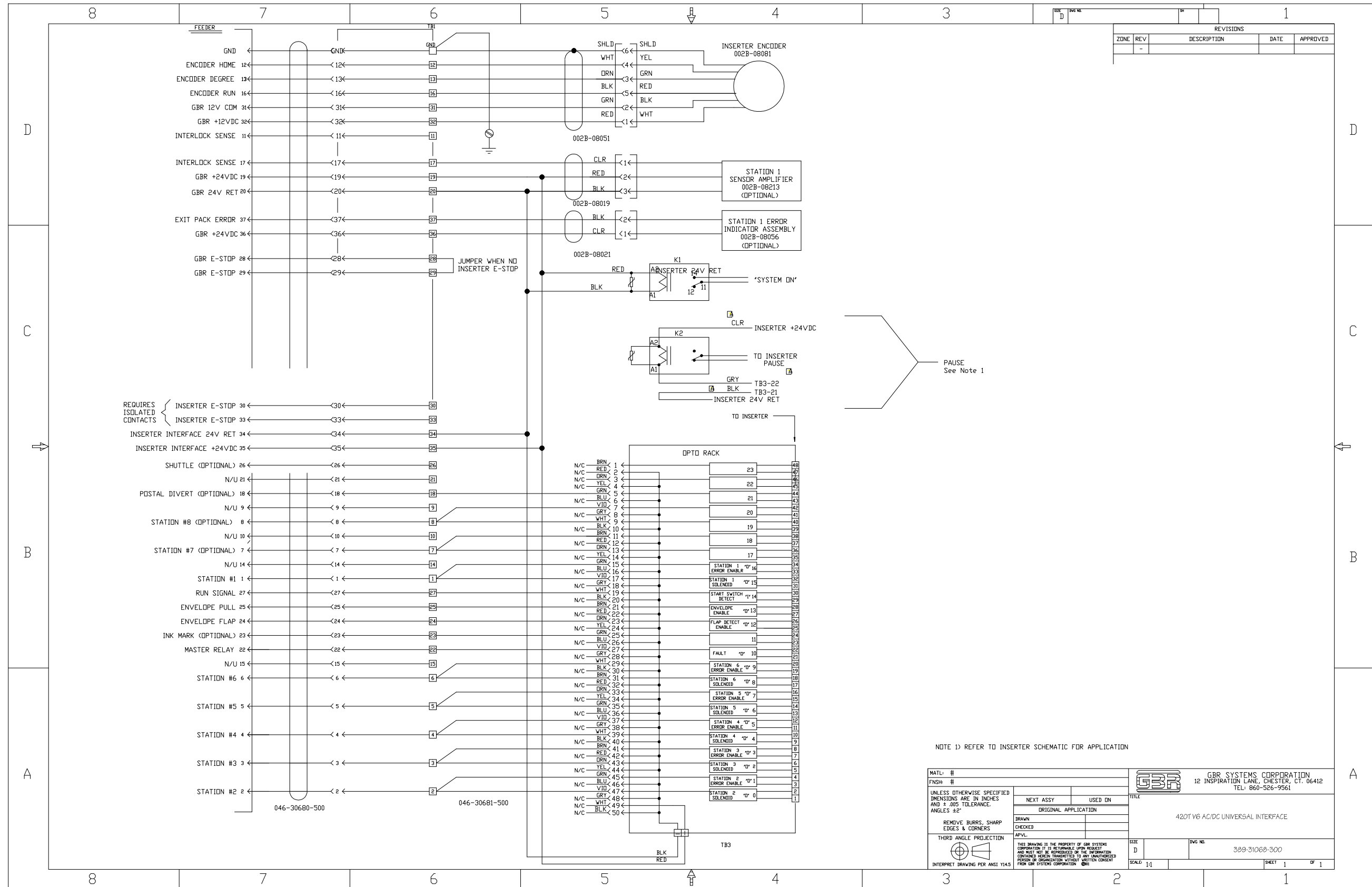
420T V6LT INSERTER MODULE 7, 1, 5, 6





420T V6LT INK MARK KICKER MODULE 9, CABLE 17, 19, 32



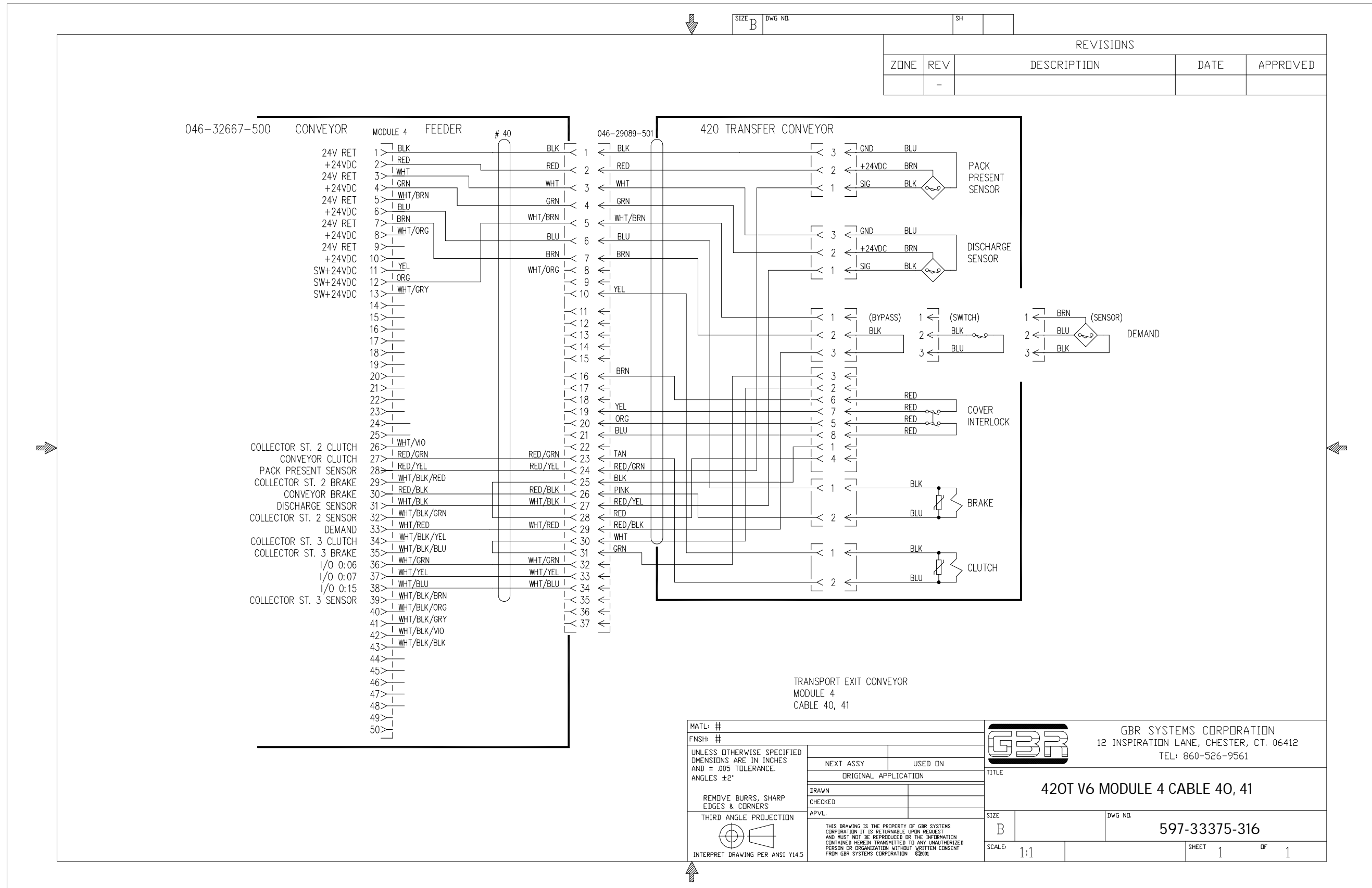
420T V6LT AC/DC UNIVERSAL INTERFACE



NOTE 1) REFER TO INSERTER SCHEMATIC FOR APPLICATION

MATL: #		 GBR SYSTEMS CORPORATION 12 INSPIRATION LANE, CHESTER, CT. 06412 TEL: 860-526-9561
FNDR: #		
UNLESS OTHERWISE SPECIFIED DIMENSIONS ARE IN INCHES AND ± .005 TOLERANCE. ANGLES ± 2°	NEXT ASSY	USED ON
REMOVE BURRS, SHARP EDGES & CORNERS	BROWN	CHECKED
THIRD ANGLE PROJECTION	APPL.	
 <small>INTERPRET DRAWING PER ANSI Y14.5</small>	TITLE 420T V6 AC/DC UNIVERSAL INTERFACE	
	SIZE	DWG NO.
	D	389-31068-300
	SCALE	SHEET
	1:1	1 OF 1

420T V6LT AC/DC UNIVERSAL INTERFACE



REVISIONS				
ZONE	REV	DESCRIPTION	DATE	APPROVED
-	-			

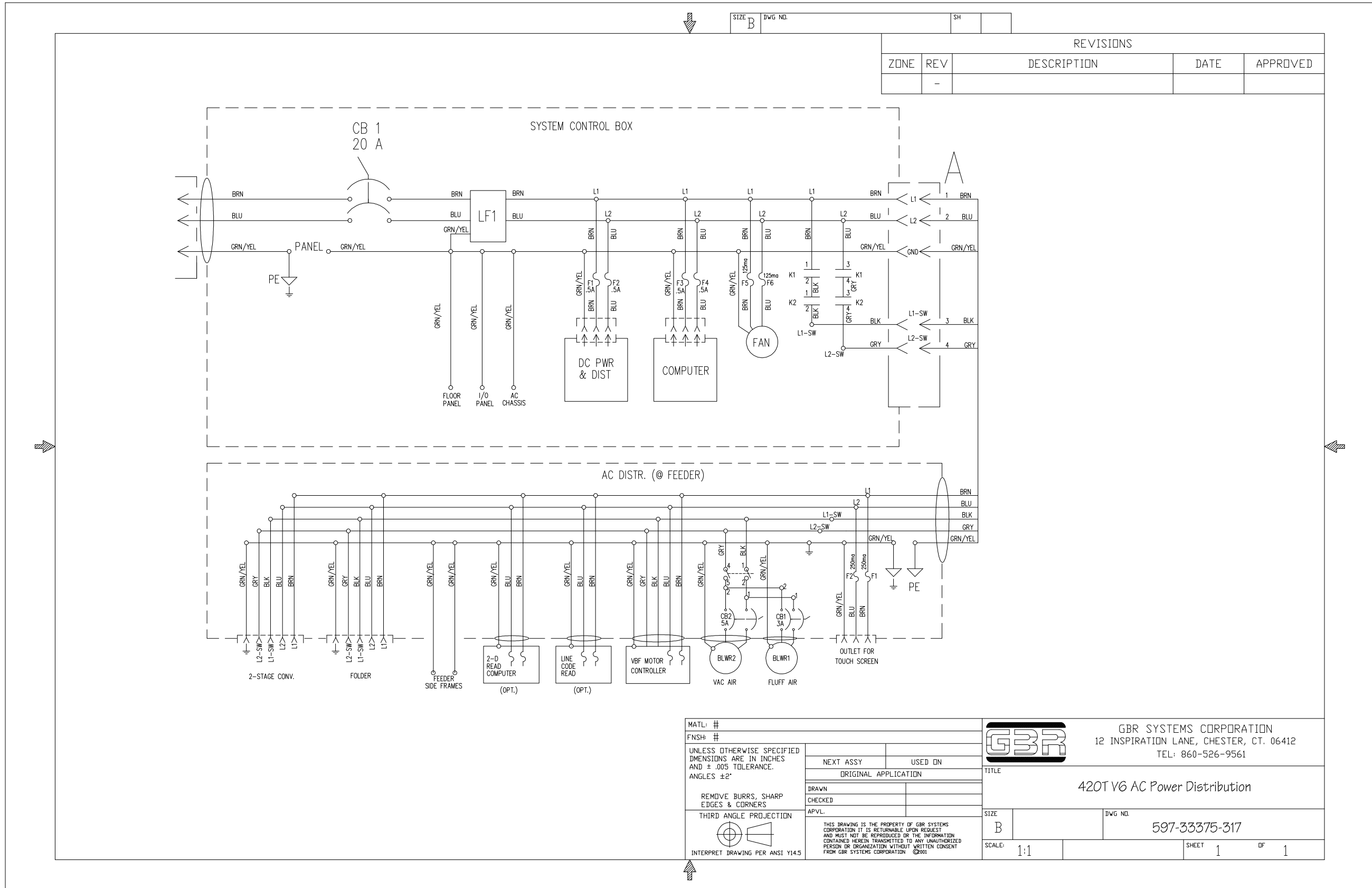
SIZE B DWG NO. SH

TRANSPORT EXIT CONVEYOR
MODULE 4
CABLE 40, 41

MATL: #	
FNISH: #	
UNLESS OTHERWISE SPECIFIED DIMENSIONS ARE IN INCHES AND ± .005 TOLERANCE. ANGLES ±2°	
REMOVE BURRS, SHARP EDGES & CORNERS	
THIRD ANGLE PROJECTION	
INTERPRET DRAWING PER ANSI Y14.5	

		GBR SYSTEMS CORPORATION 12 INSPIRATION LANE, CHESTER, CT. 06412 TEL: 860-526-9561	
NEXT ASSY USED IN		TITLE 420T V6 MODULE 4 CABLE 40, 41	
ORIGINAL APPLICATION		SIZE B	
DRAWN CHECKED APVL.		DWG NO. 597-33375-316	
THIS DRAWING IS THE PROPERTY OF GBR SYSTEMS CORPORATION IT IS RETURNABLE UPON REQUEST AND MUST NOT BE REPRODUCED OR THE INFORMATION CONTAINED HEREIN TRANSMITTED TO ANY UNAUTHORIZED PERSON OR ORGANIZATION WITHOUT WRITTEN CONSENT FROM GBR SYSTEMS CORPORATION ©2001		SCALE: 1:1 SHEET 1 OF 1	

420T V6LT AC POWER DISTRIBUTION



REVISIONS				
ZONE	REV	DESCRIPTION	DATE	APPROVED
	-			

MATL #				GBR	GBR SYSTEMS CORPORATION 12 INSPIRATION LANE, CHESTER, CT. 06412 TEL: 860-526-9561	
FNSH #					TITLE 420T V6 AC Power Distribution	
UNLESS OTHERWISE SPECIFIED DIMENSIONS ARE IN INCHES AND ± .005 TOLERANCE. ANGLES ± 2°				NEXT ASSY		USED ON
REMOVE BURRS, SHARP EDGES & CORNERS				ORIGINAL APPLICATION		
THIRD ANGLE PROJECTION				DRAWN		
 INTERPRET DRAWING PER ANSI Y14.5				CHECKED		
THIS DRAWING IS THE PROPERTY OF GBR SYSTEMS CORPORATION. IT IS RETURNABLE UPON REQUEST AND MUST NOT BE REPRODUCED OR THE INFORMATION CONTAINED HEREIN TRANSMITTED TO ANY UNAUTHORIZED PERSON OR ORGANIZATION WITHOUT WRITTEN CONSENT FROM GBR SYSTEMS CORPORATION ©2001.				APVL		
SIZE B		DWG NO. 597-33375-317		SHEET 1 OF 1		
SCALE 1:1						