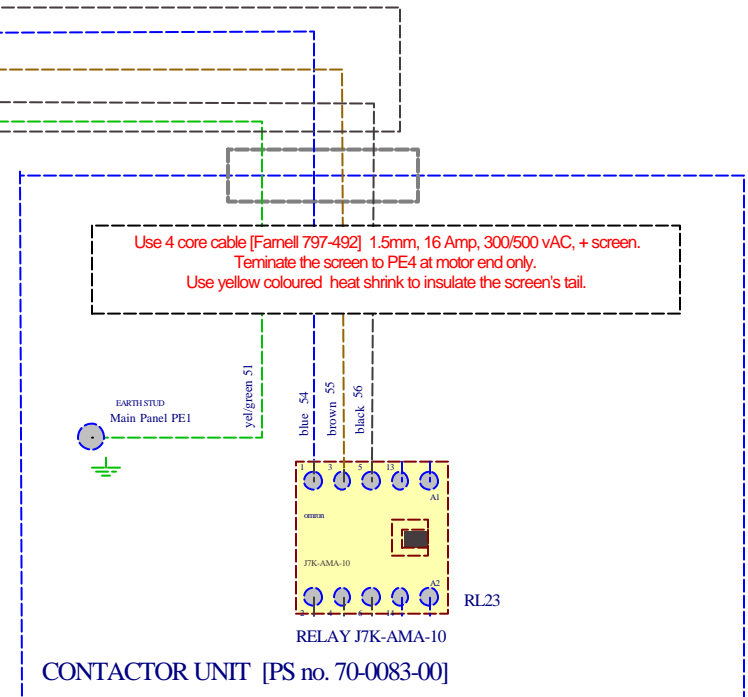
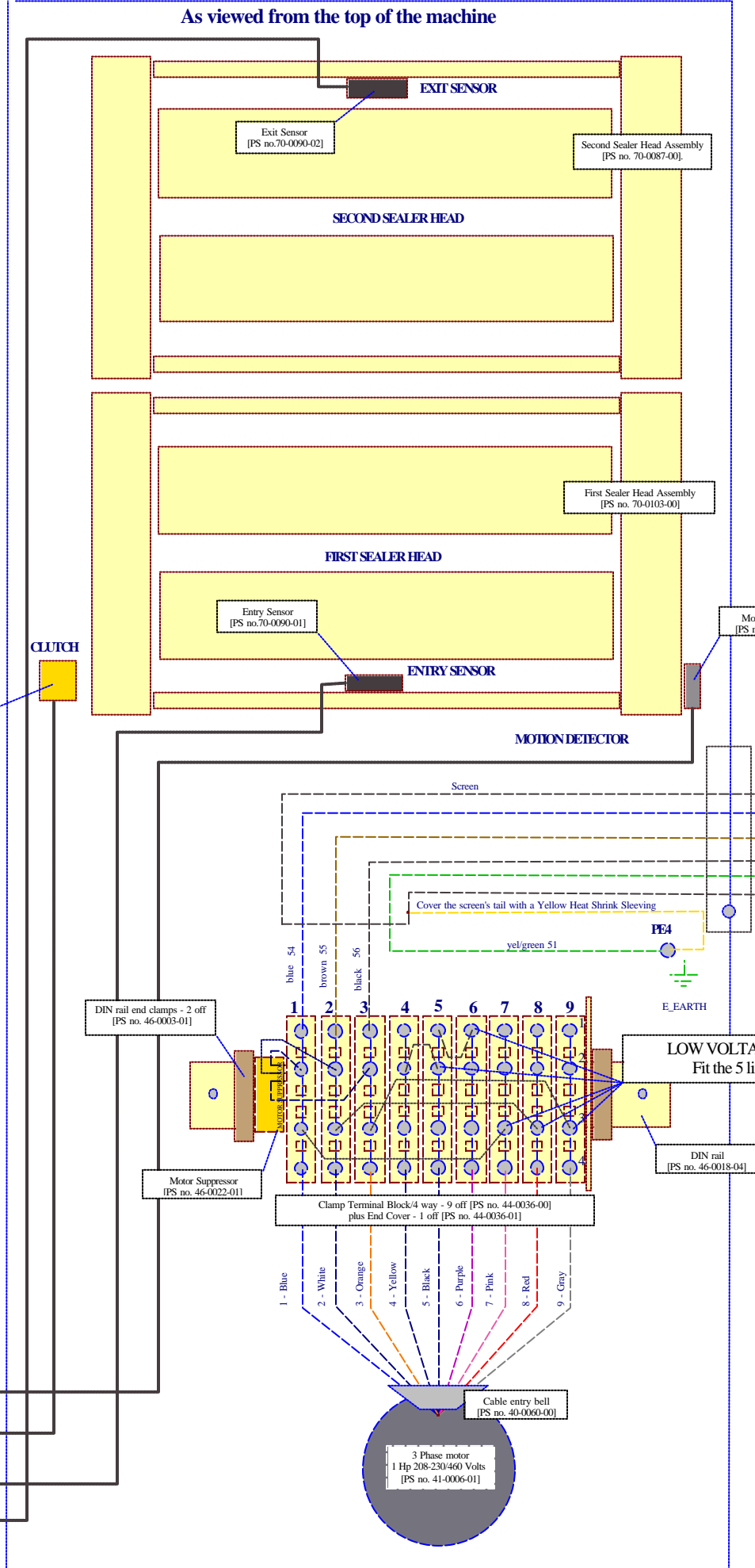
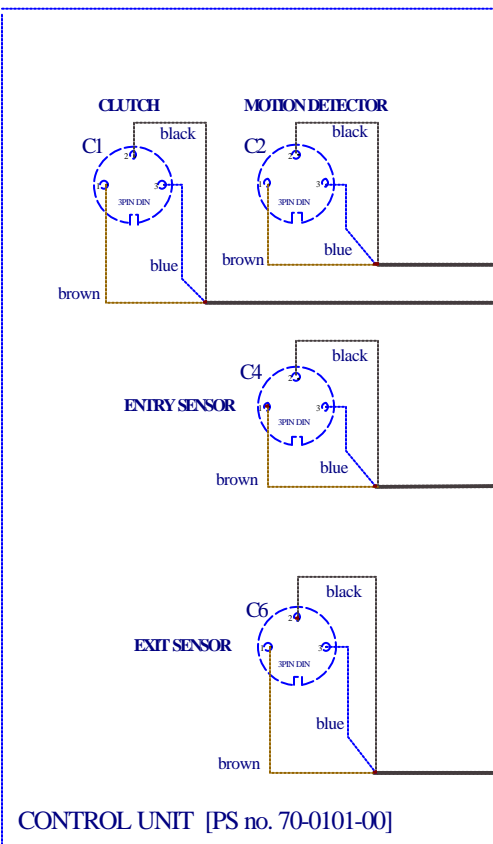


As viewed from the top of the machine



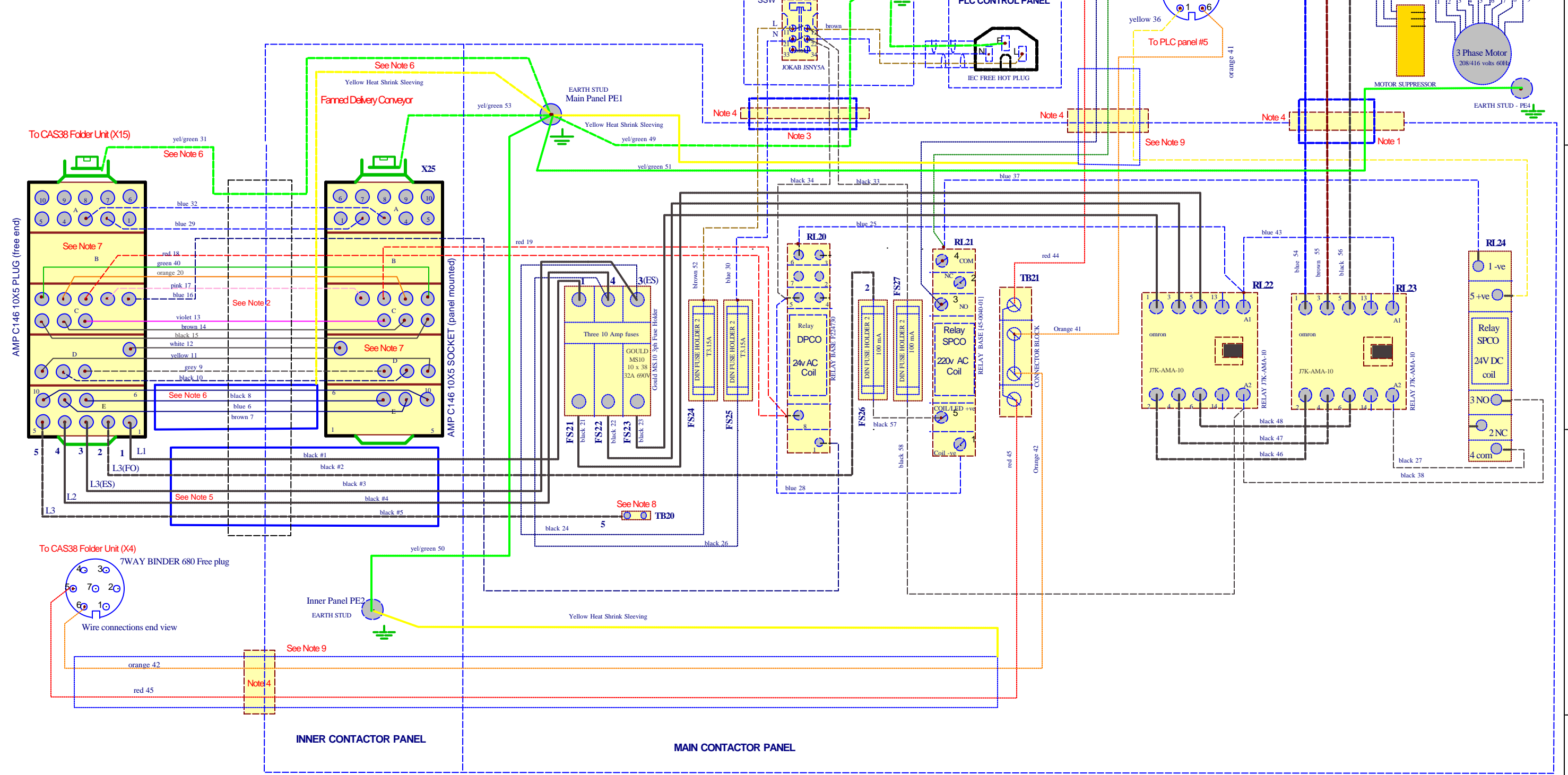
Please note that plugs are shown as viewed from the connections side. All the PS 70-xxxx-yy series parts refer to here are complete with the correct length of cable and associated 3 pin plug.



- 1 - Blue
- 2 - White
- 3 - Orange
- 4 - Yellow
- 5 - Black
- 6 - Purple
- 7 - Pink
- 8 - Red
- 9 - Gray

3x240volt Version

- Note 1: 4 core cable [Farnell 797-492] [1.5mm] screen. Terminate the screen to PE4 at motor end only. Use yellow coloured heat shrink to insulate the screen.
- Note 2: PMAFLEX IP68 flexible conduit.
- Note 3: 5 core cable [RS 380-047] [1mm].
- Note 4: Cable gland PG11.
- Note 5: 7 core cable [RS389-858]. Yellow/green earth and #6 wire are not used. See Note 6 for main earth [PE] termination.
- Note 6: 4 core cable [Farnell 797-492] [1.5mm] screen. Protective Earth [PE] and screen wires are separately connected to PE1. Use yellow coloured heat shrink to insulate the screen.
- Note 7: Viewed from the wire connections side.
- Note 8: When the 3 phase supply is 3+PE, i.e. 3x240 volt, then terminate wire #5 using the free Terminal Block TB20. Cover the terminal block twice with black coloured heat shrink. The length of the free wire end should allow the wire to be connected to the bottom of FS25, as it may be required in the future to be configured as a 3 phase 3+N+PE, i.e. 3x400volt.
- Note 9: 6 core cable [RS 111-9054] 24 AWG shield. Terminate screen wire to PE2. Use yellow coloured heat shrink to insulate the screen.



Only use WIRING SCHEDULE "PS800 SEALER: Contactor DV Wiring List 48000300.xls"

Issue 2 - 27/3/02 CRN changes: New relay type for RL22 and RL23 - both have 240v AC coil. Wiring to the lid safety switches (SSW 21 & 22) changed. Two fuse holders removed from the Control Unit and installed in the Contactor Unit. Fuse identities changed to being numbered from the left. 4 DIN rail clamp type connector blocks (C21 to C24) removed and replaced by a terminal block (TB21) and 2 fuse holders (FS24 and FS25) which provide power to the Control Unit. Wire numbers 1,3, 4, 21, 22, and 23 re-routed. RL24 added - a 24vDC coil relay used to switch the new motor contactor relay RL23. Note 9 added.

w0002 - 14/04/03: Wiring to 10A fuses changed with line moved to the top and load to the bottom.

Issue 1 - 10/12/01 Revision G raised to Issue 1

Draft Issue 2 [27/11/02]	Pressure Seal Systems Ltd. 1 The Dean New Alresford Hampshire SP800		
	PS800 CONTACTOR UNIT [DV] - 3x240/60Hz/PE		
Size A2	FCSM No.	DWG No.	48-0003-01
Scale			Sheet 4 of 0

IN FEED (or ENTRY) COVER [PS no. 70-0102-00] SUB-ASSEMBLY

Viewed from the outside of cover

ENTRY (or IN FEED) COVER [less fittings]
51-00036-01

Note: Viewed from the wire connections side

READY / LID RELEASE BUTTON SWITCH
42-0011-01

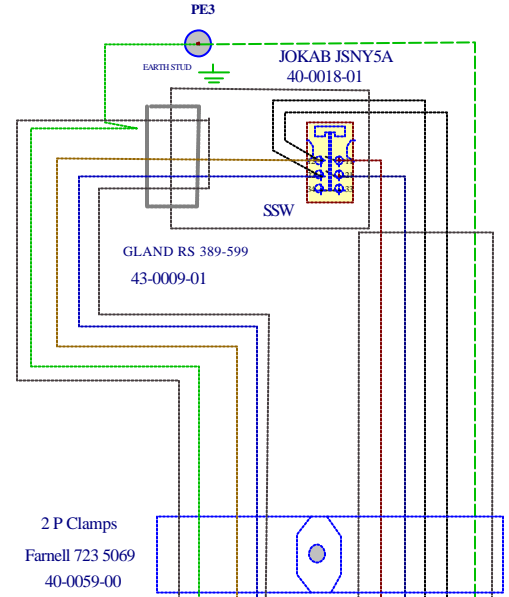
BUTTONS
CON 3 (plug free)

LID SOLENOID
CON 7 (plug free)

FAN
CON 8 (plug free)

Note: Viewed from the wire connections side

CONTROL UNIT [PS no. 70-0101-00] connections panel



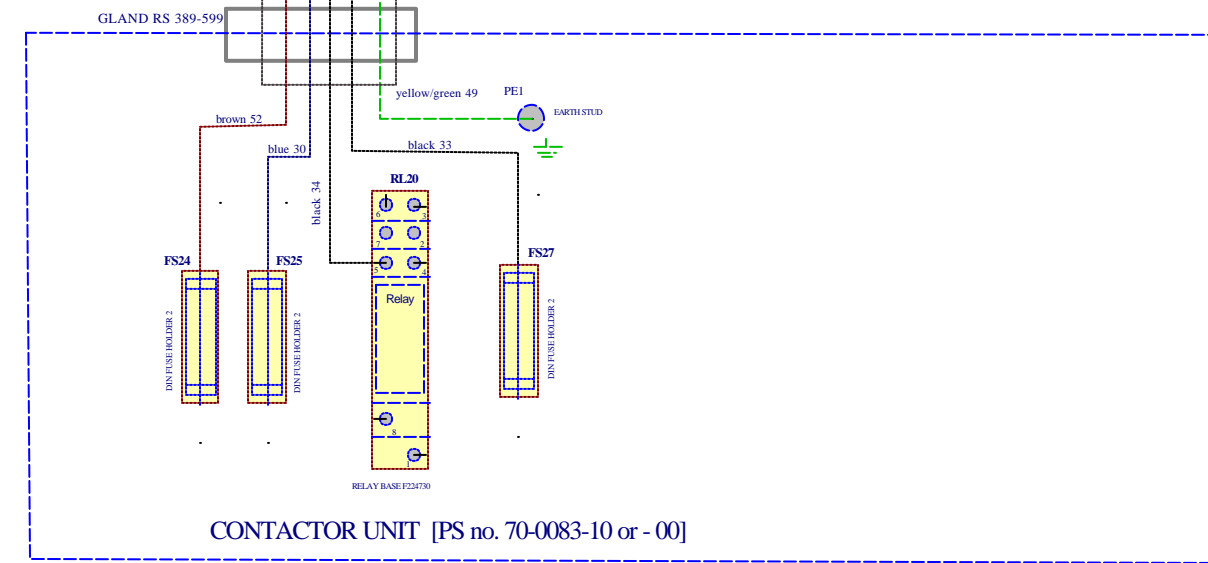
2 P Clamps
Farnell 723 5069
40-0059-00

Use 5 core cable [RS 390-047]
1mm, 16 Amp, 300/500VAC.

Use 3 core cable [RS 365-420]
1mm, 16 Amp, 300/500VAC.

3 core cable 1mm sq 10 amp [RS 365 420] wire

IC INLET FOR FREE SOCKET
CON 9
45-0044-01

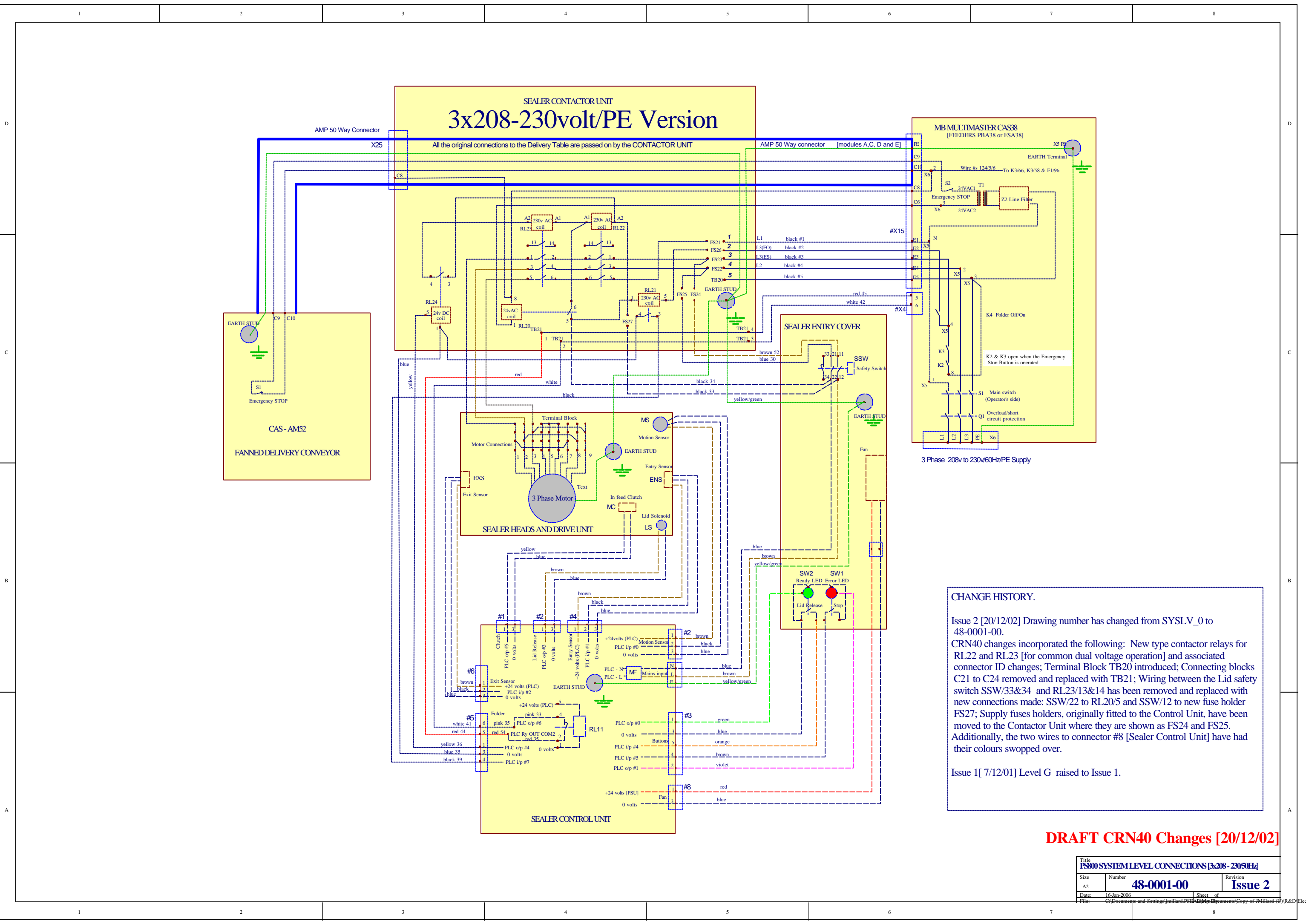


CONTACTOR UNIT [PS no. 70-0083-10 or -00]

Only use WIRING SCHEDULE "PS800 SEALER: IN FEED COVER DV Wiring List 4800040.xls"

DRAFT C 13/01/2003

Title: ENTRY COVER WIRING DIAGRAM		
Rev: A1	Number: 48-0004-00	Revision: Draft C
Date: 10 Jan 2003	Drawn by: [Name]	Sheet of: [Total]
File: C:\Documents and Settings\jls111\My Documents\Copy of Draft C 13/01/2003		



CHANGE HISTORY.

Issue 2 [20/12/02] Drawing number has changed from SYSLV_0 to 48-0001-00.

CRN40 changes incorporated the following: New type contactor relays for RL22 and RL23 [for common dual voltage operation] and associated connector ID changes; Terminal Block TB20 introduced; Connecting blocks C21 to C24 removed and replaced with TB21; Wiring between the Lid safety switch SSW/33&34 and RL23/13&14 has been removed and replaced with new connections made: SSW/22 to RL20/5 and SSW/12 to new fuse holder FS27; Supply fuses holders, originally fitted to the Control Unit, have been moved to the Contactor Unit where they are shown as FS24 and FS25. Additionally, the two wires to connector #8 [Sealer Control Unit] have had their colours swapped over.

Issue 1 [7/12/01] Level G raised to Issue 1.

DRAFT CRN40 Changes [20/12/02]

Title PS80 SYSTEM LEVEL CONNECTIONS [3x208-230V/60Hz]		
Size A2	Number 48-0001-00	Revision Issue 2
Date 16-Jan-2006	Sheet of 1	File C:\Documents and Settings\jmillard\PS80\Documents\COPY of Millard (J)\R&D\Elect